

PROCESSO Nº 23046

ANO 1984

II VOLUME

20350



SECRETARIA DE ESTADO DA CULTURA

Conselho de Defesa do Patrimônio Histórico, Arqueológico,
Artístico e Turístico do Estado - CONDEPHAAT

23046

PROCESSO Nº

INTERESSADO:	IRMANDADE DA SANTA CASA DE MISERICÓRDIA DE SÃO PAULO
PROCEDÊNCIA:	CAPITAL
DATA:	15/08/1984
REPARTIÇÃO:	
Nº DE ORDEM DO PAPEL:	
ASSUNTO:	Solicita o tombamento do Hospital Central, situado entre as Ruas: Cesário Mota Junior, Marques de Itú, Dona Veridiana e Jaguaribe - Capital

34X_v

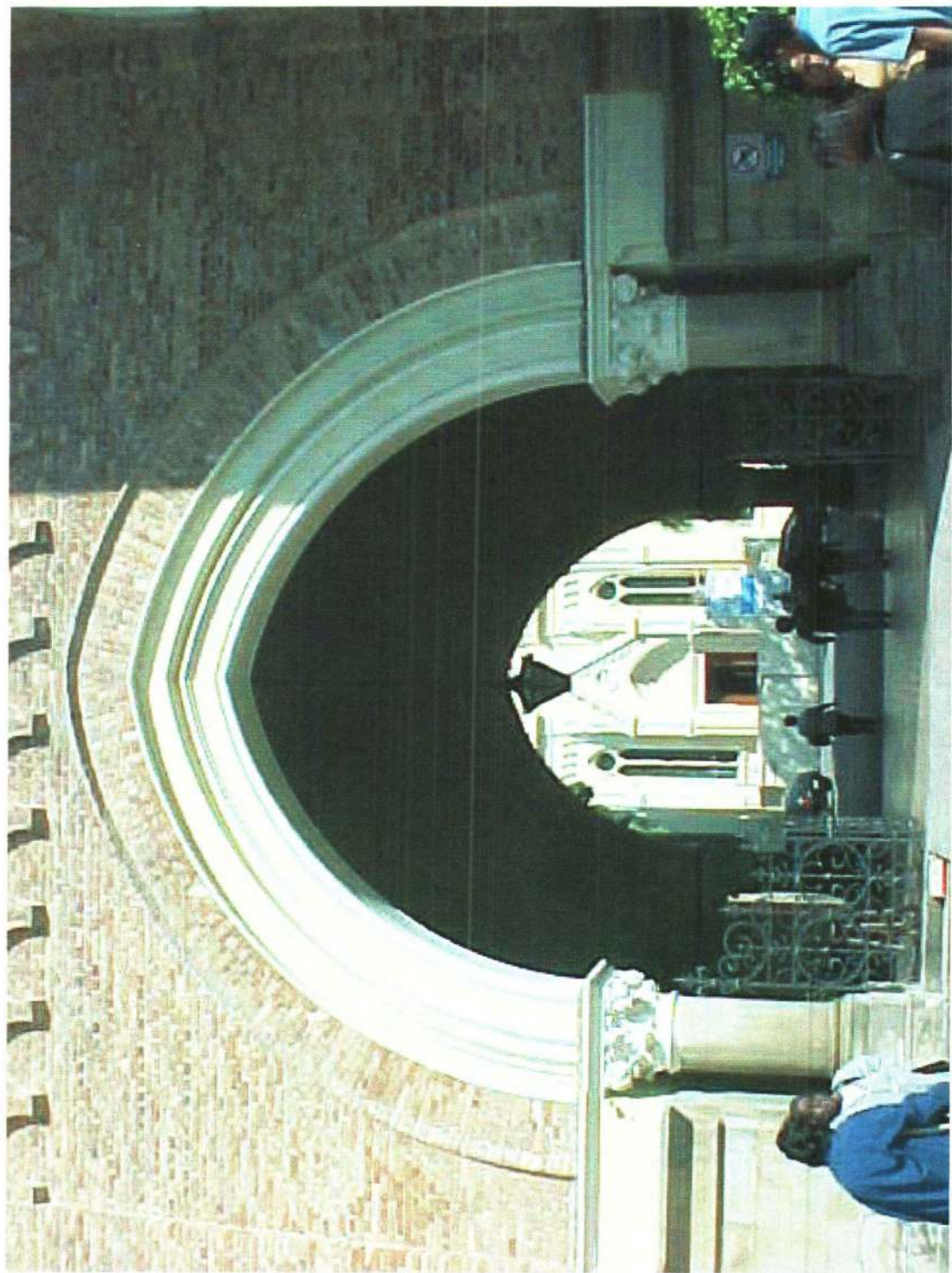
IRMANDADE
DA SANTA
CASA DE
MISERICÓRDIA
DE SÃO PAULO

Saguão Central

Fotos Atuais

Planta de Situação

348, 1



349



350



351



352



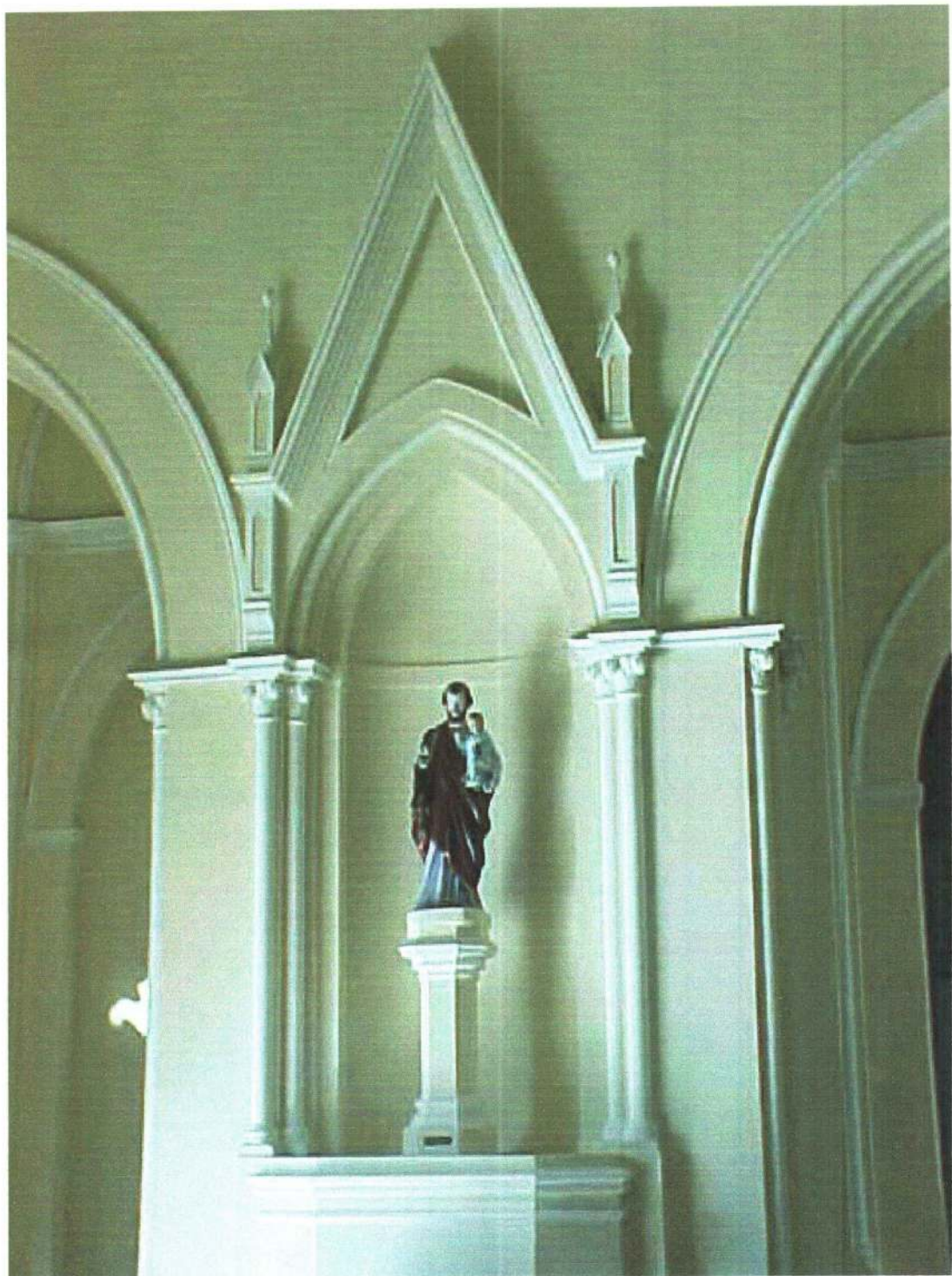
353



354



352



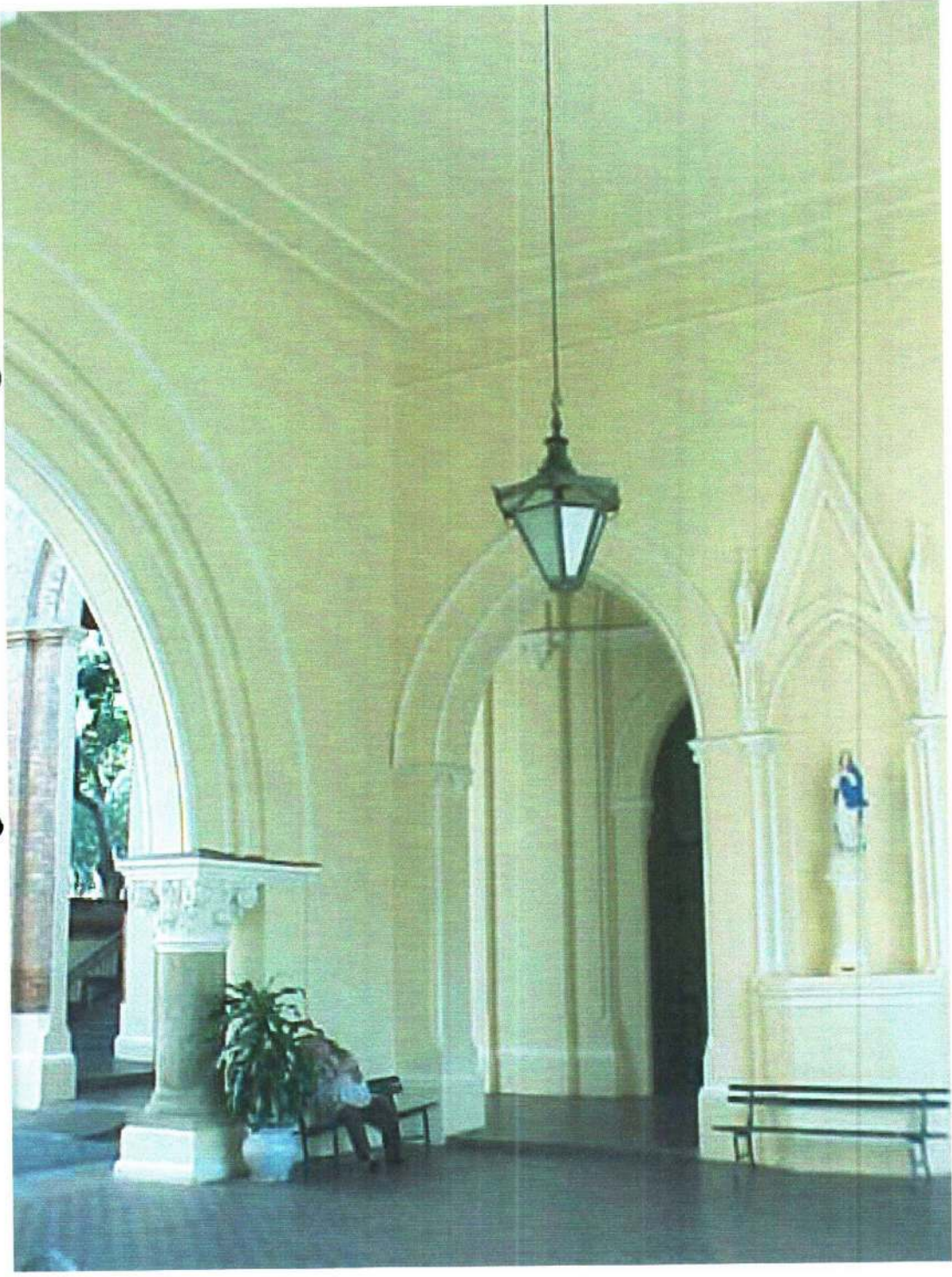
356v



35X_v

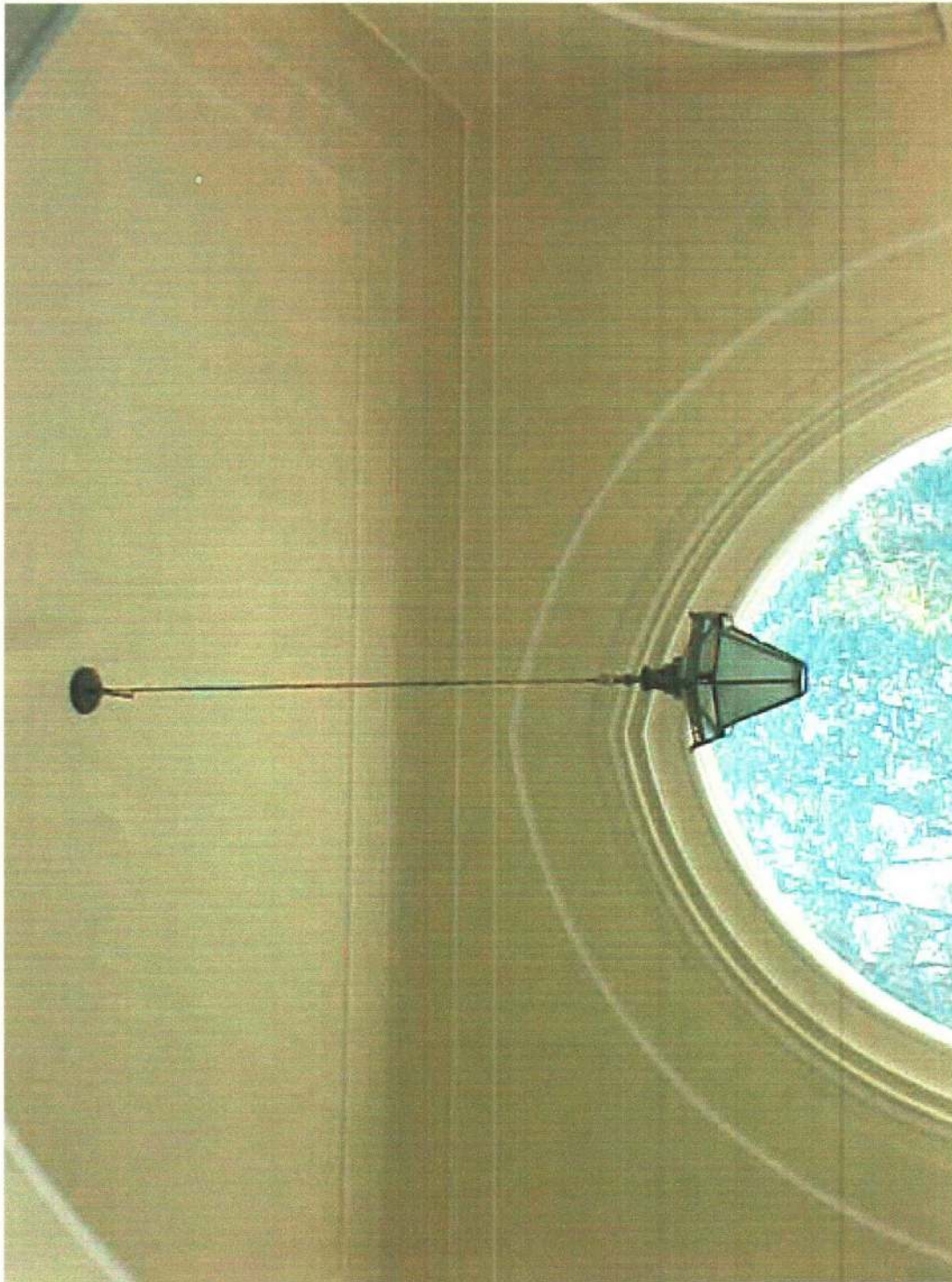


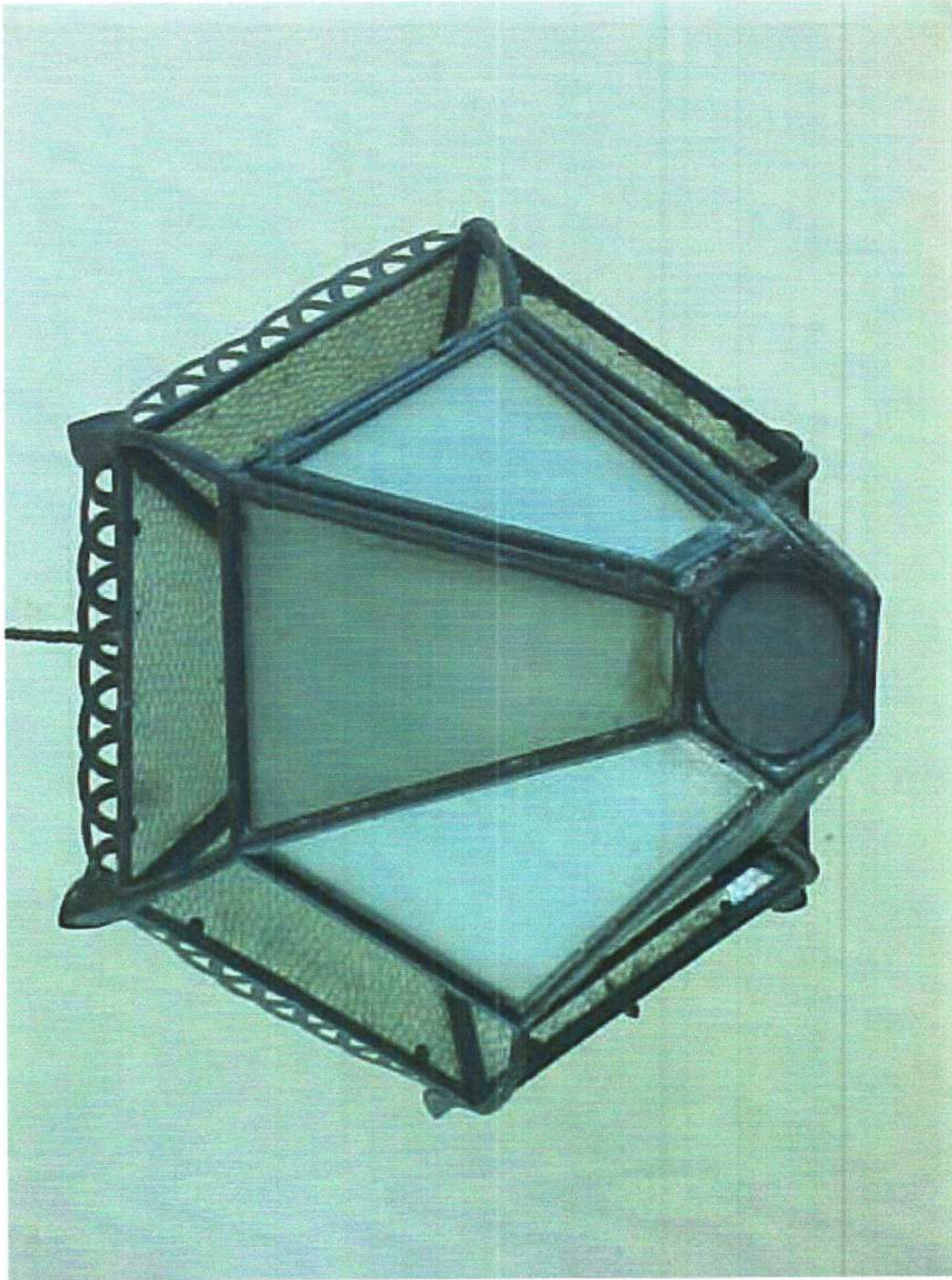
350 J



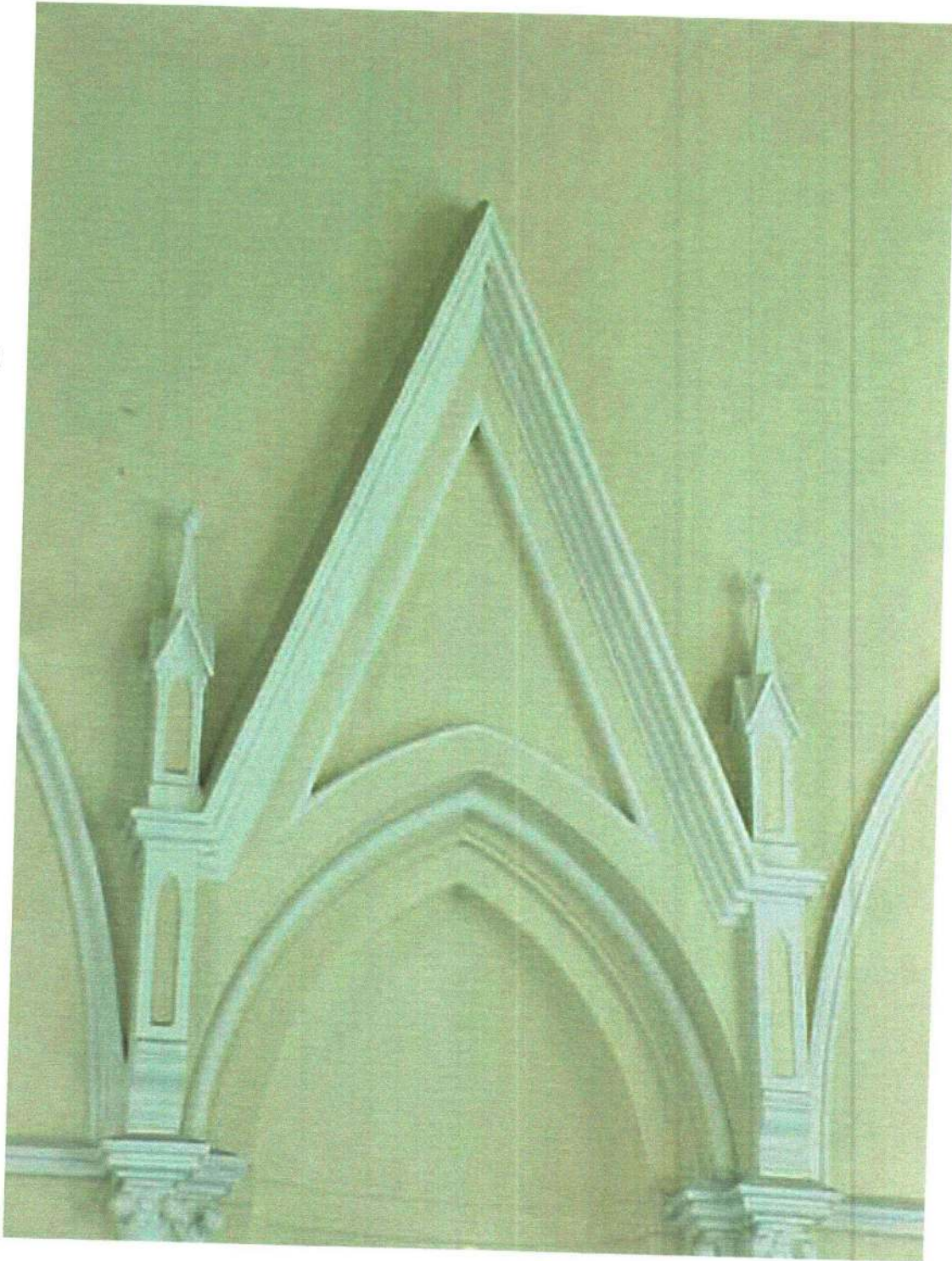
359







360 ✓





369





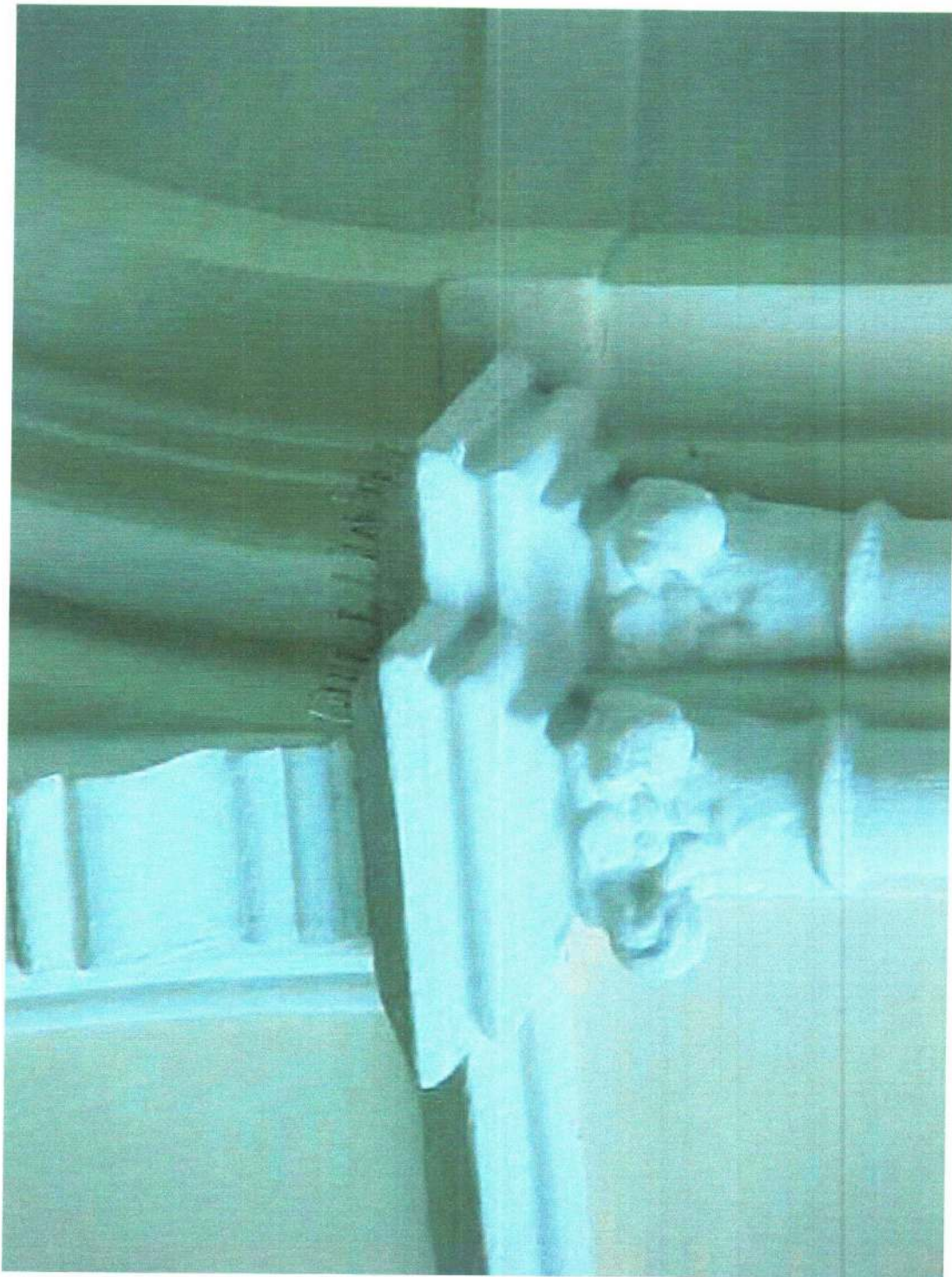
366 W



367v



368



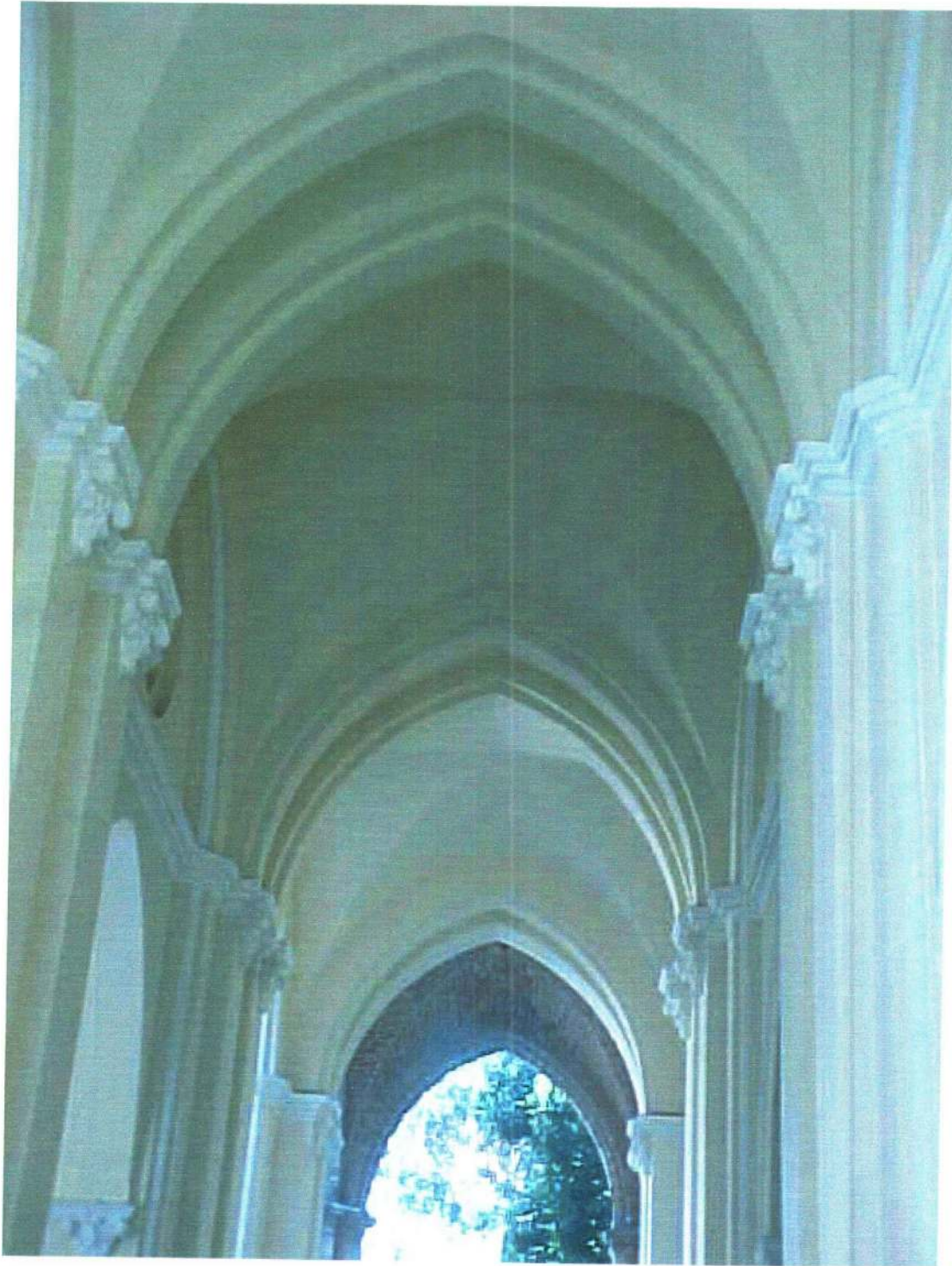
369



370



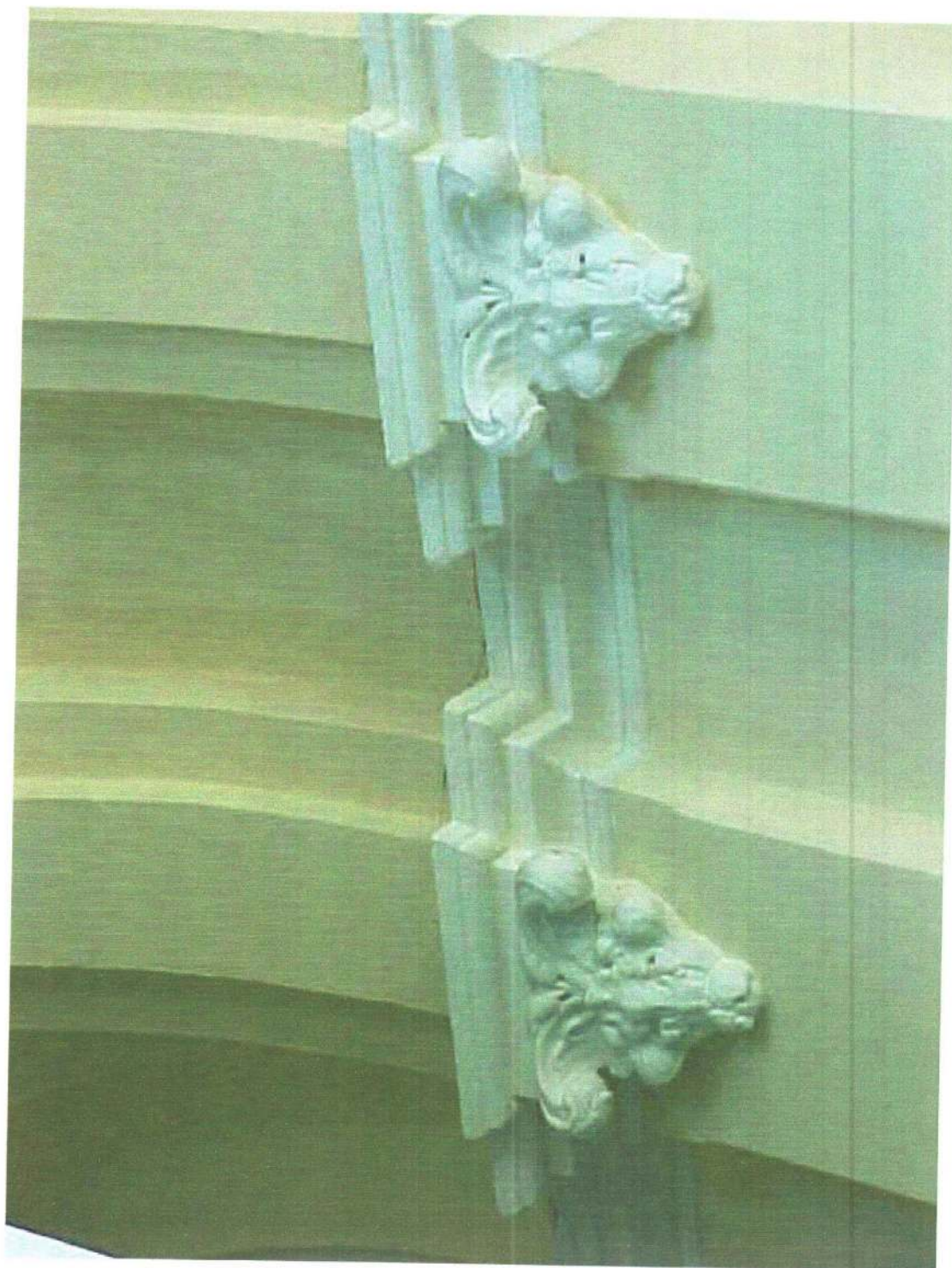
310



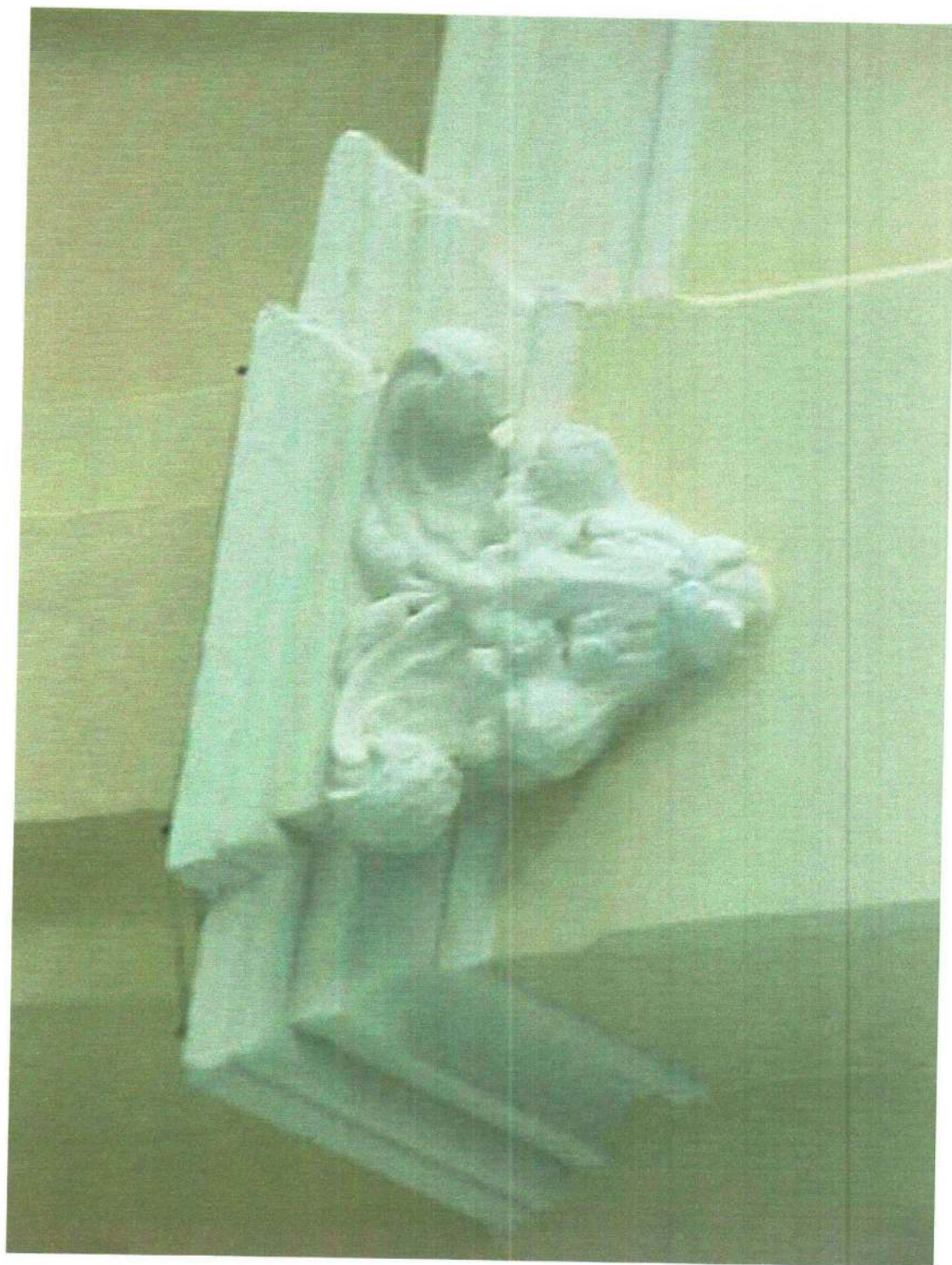
370



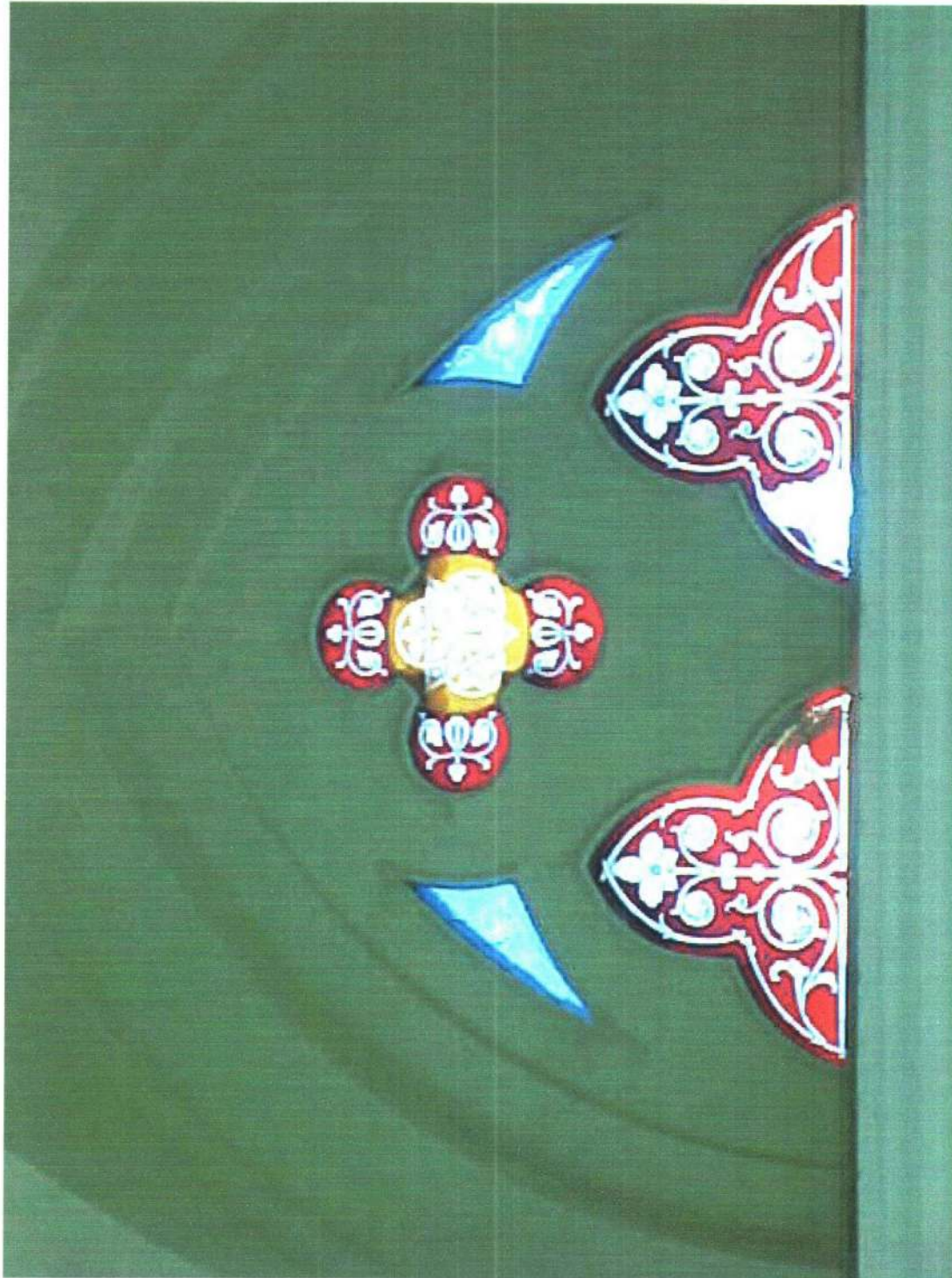
373



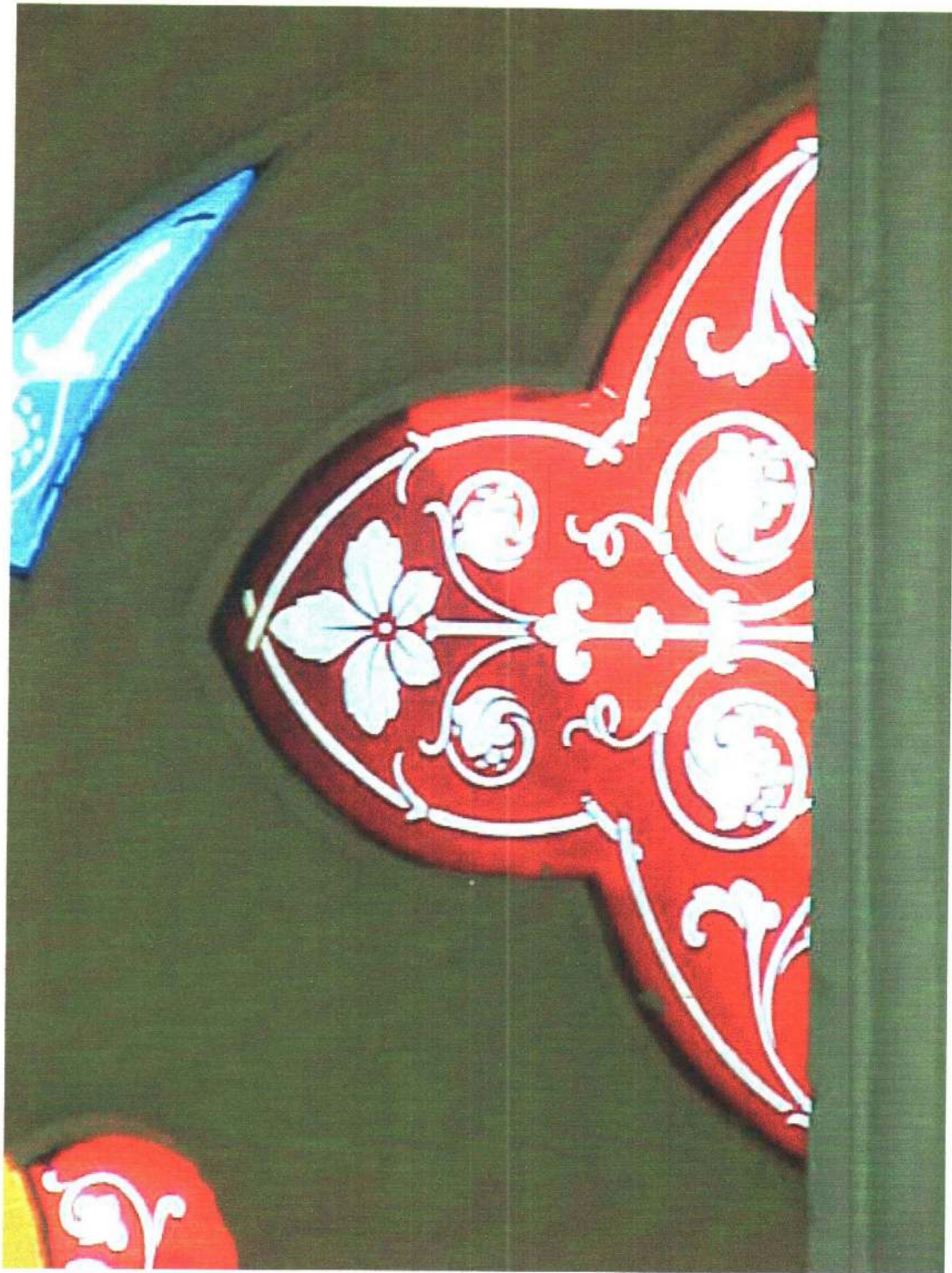
3740



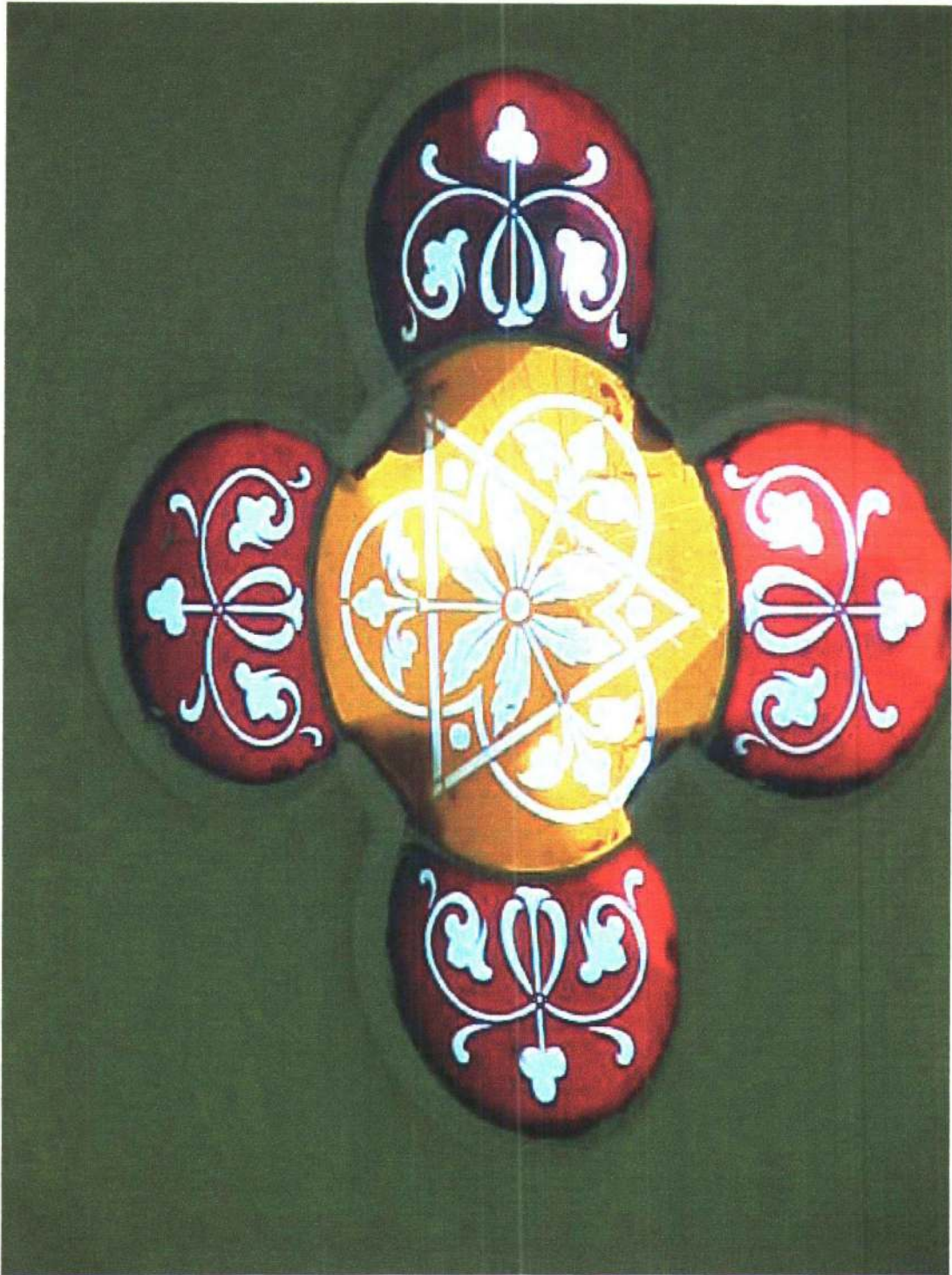
3X2



376



37X



378



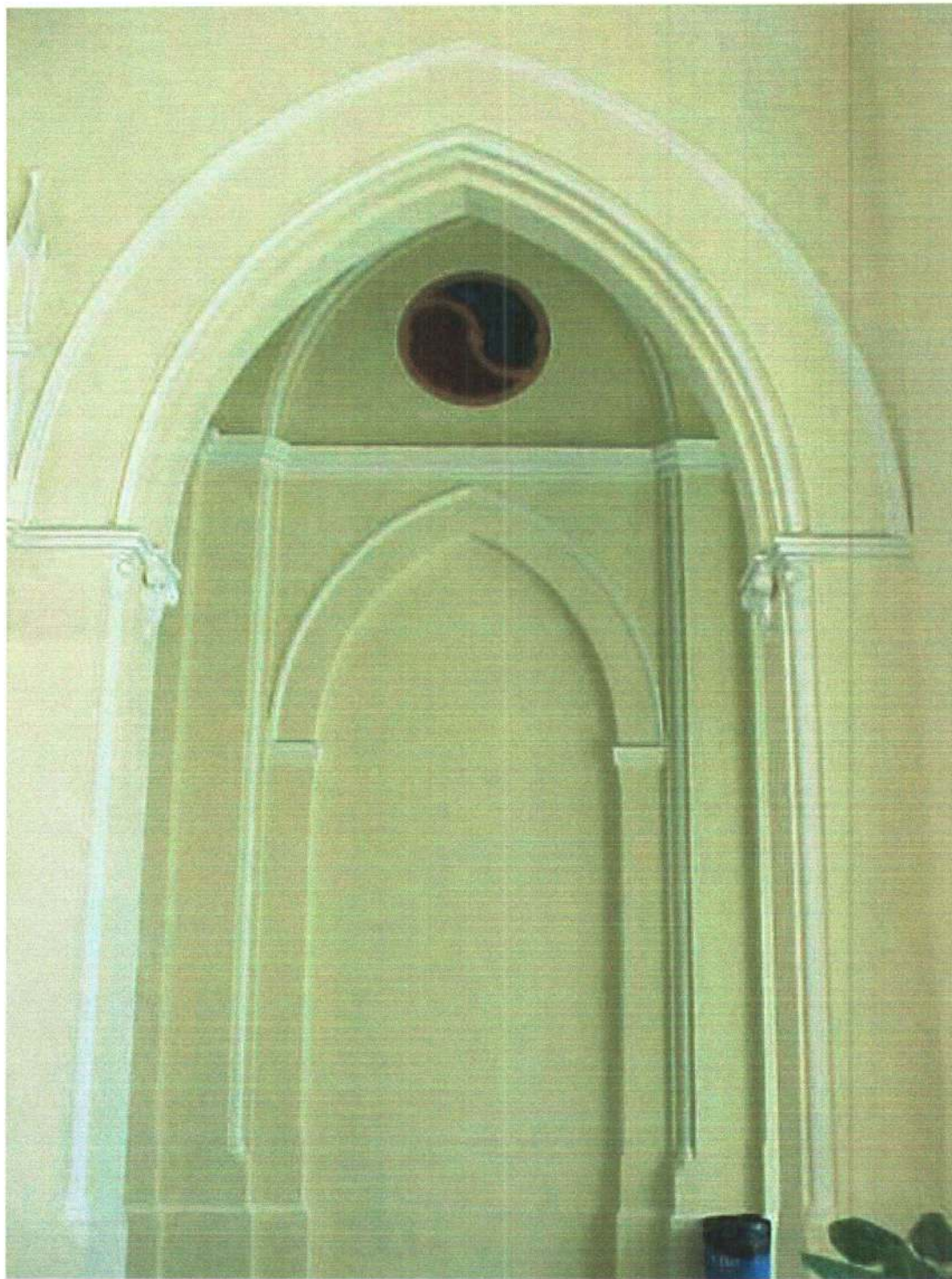
379



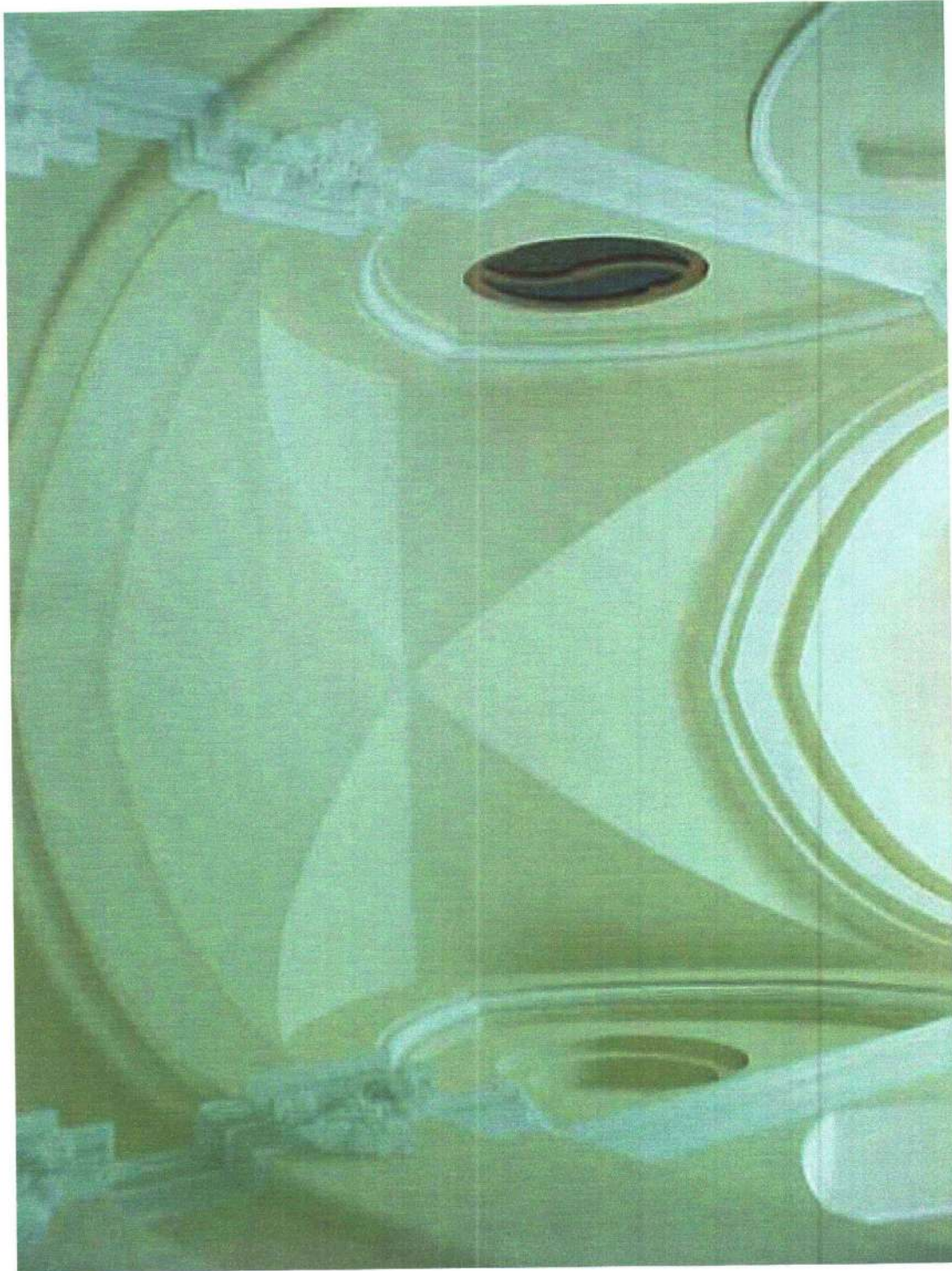
380 W



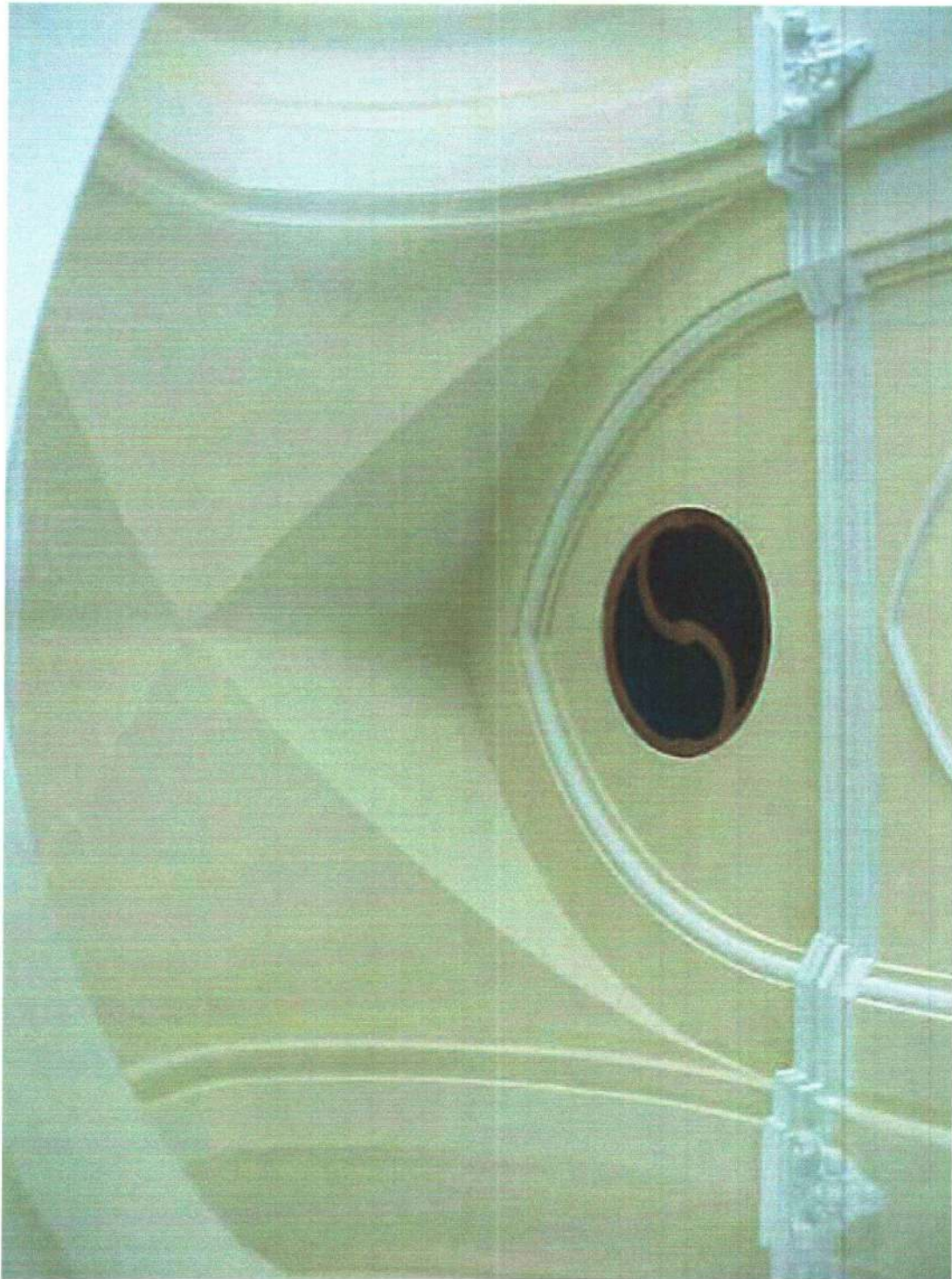
387



382
2

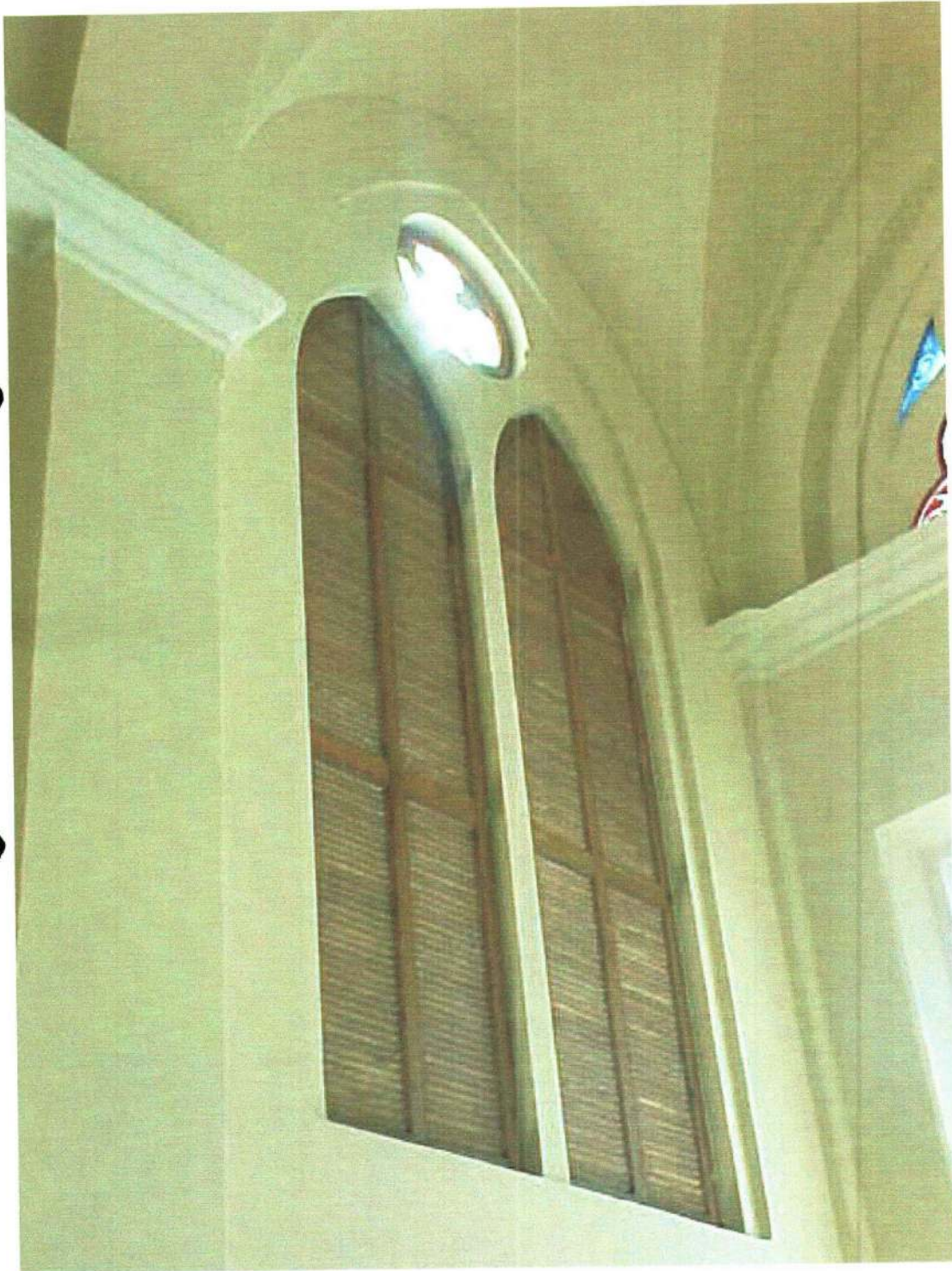


383

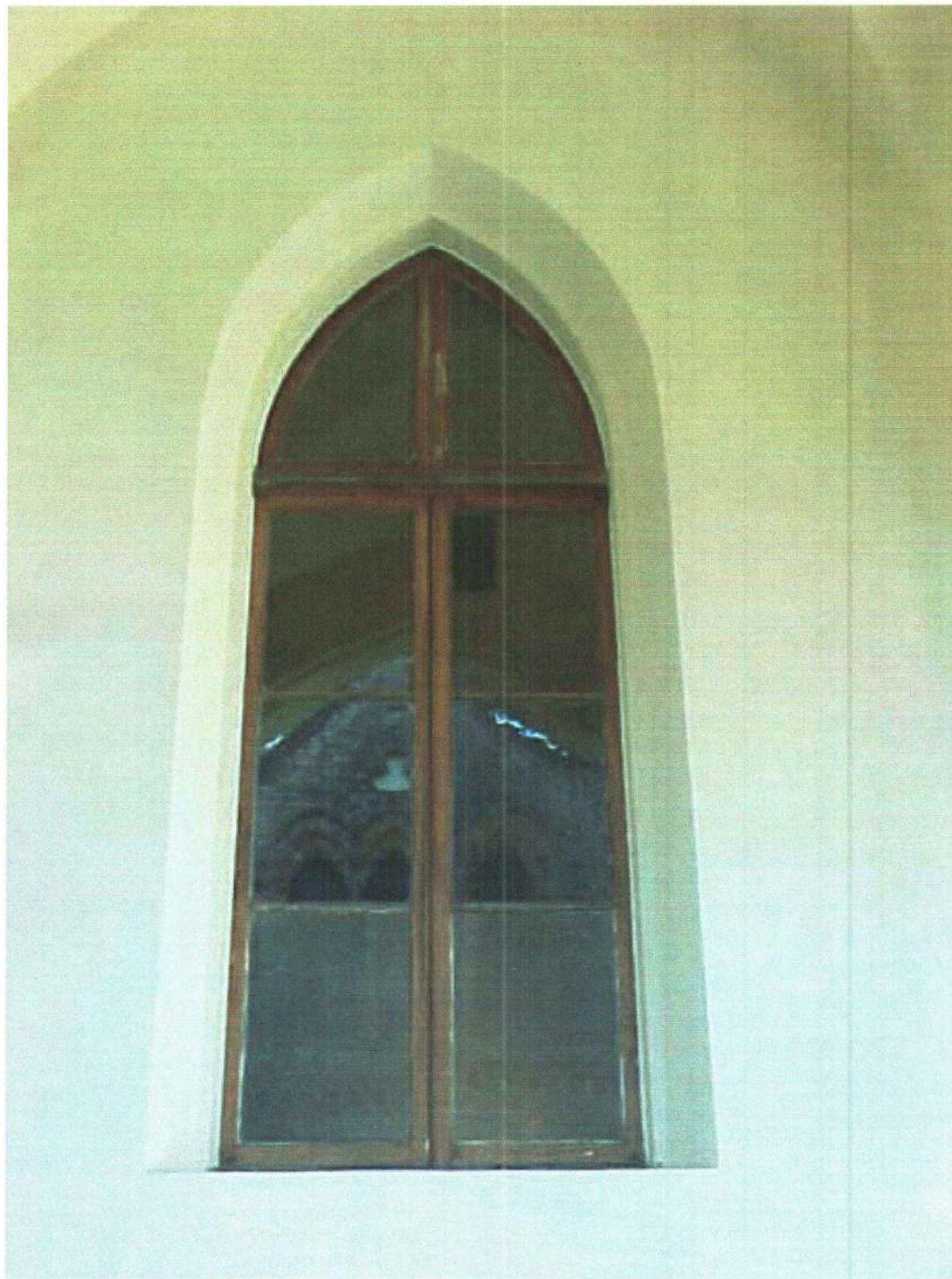


384 v





386



38X_N

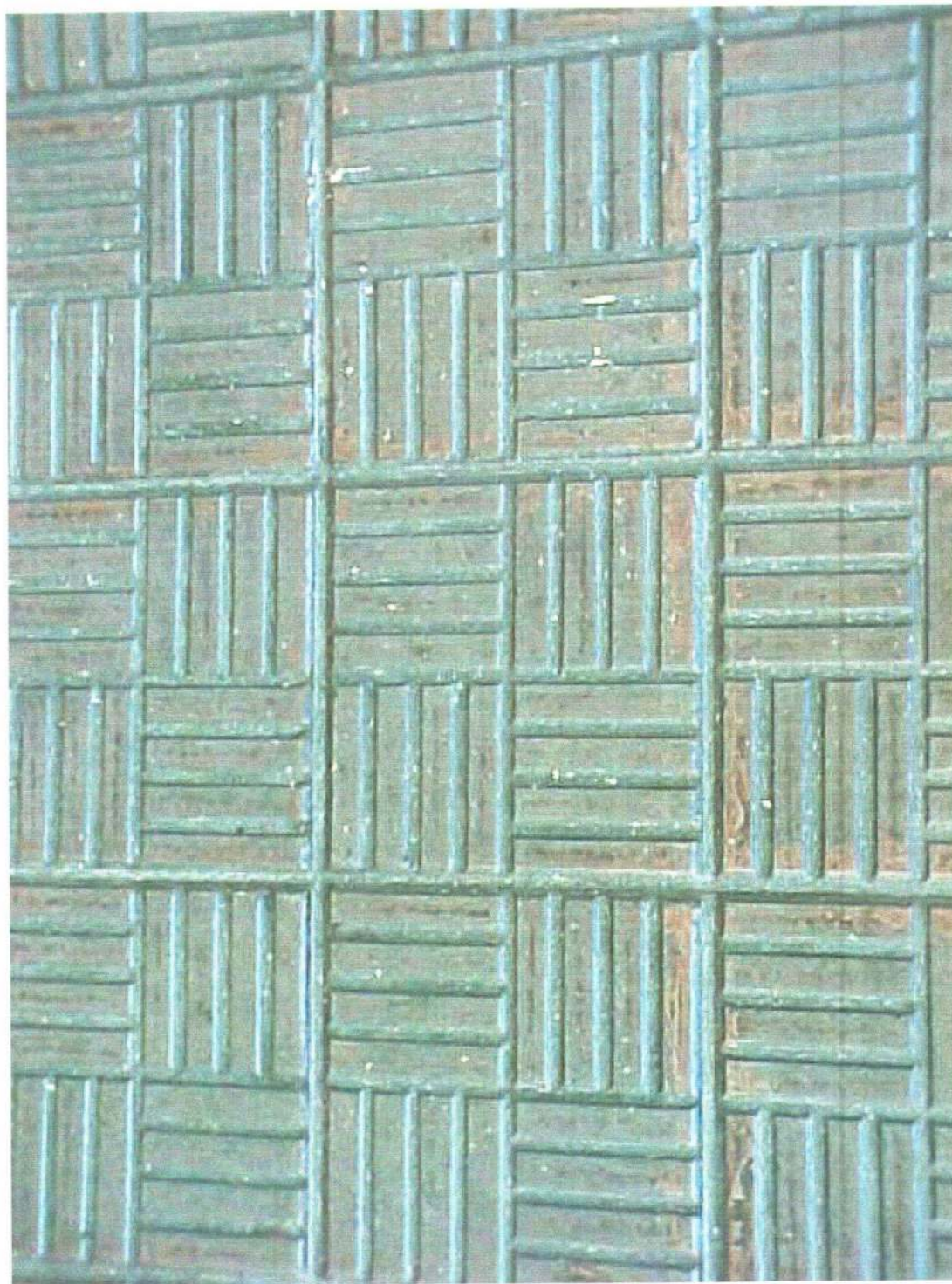


308



389 W





391



Hall central - Portal

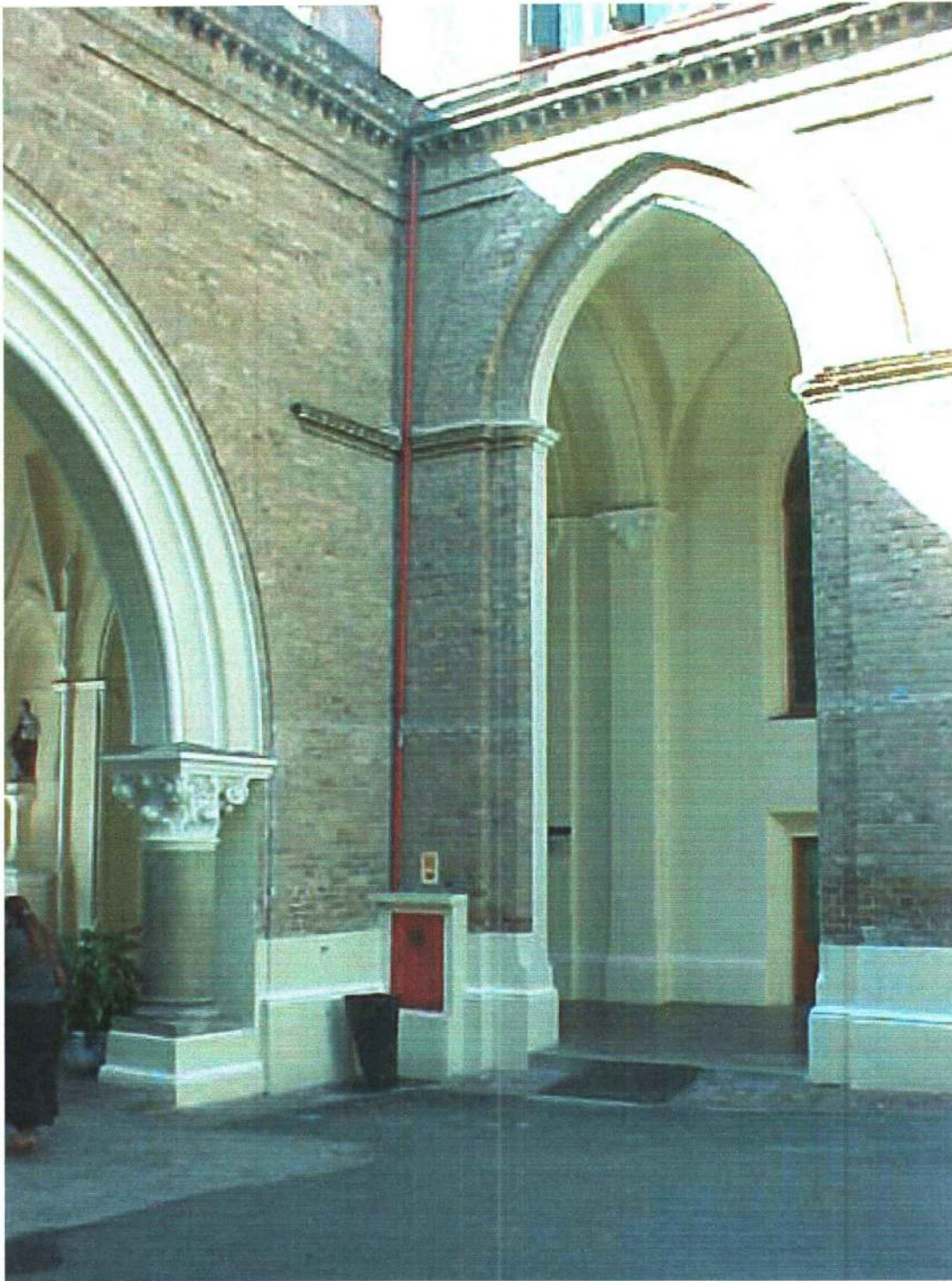
3920







3956



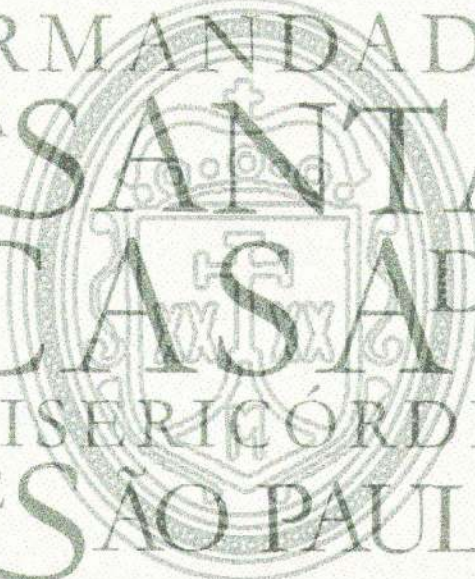
396



39X_N



391



IRMANDADE
DA SANTA
CASA DE
MISERICÓRDIA
DE SÃO PAULO

Capela

Fotos atuais

Planta, fachada e cortes

400



401

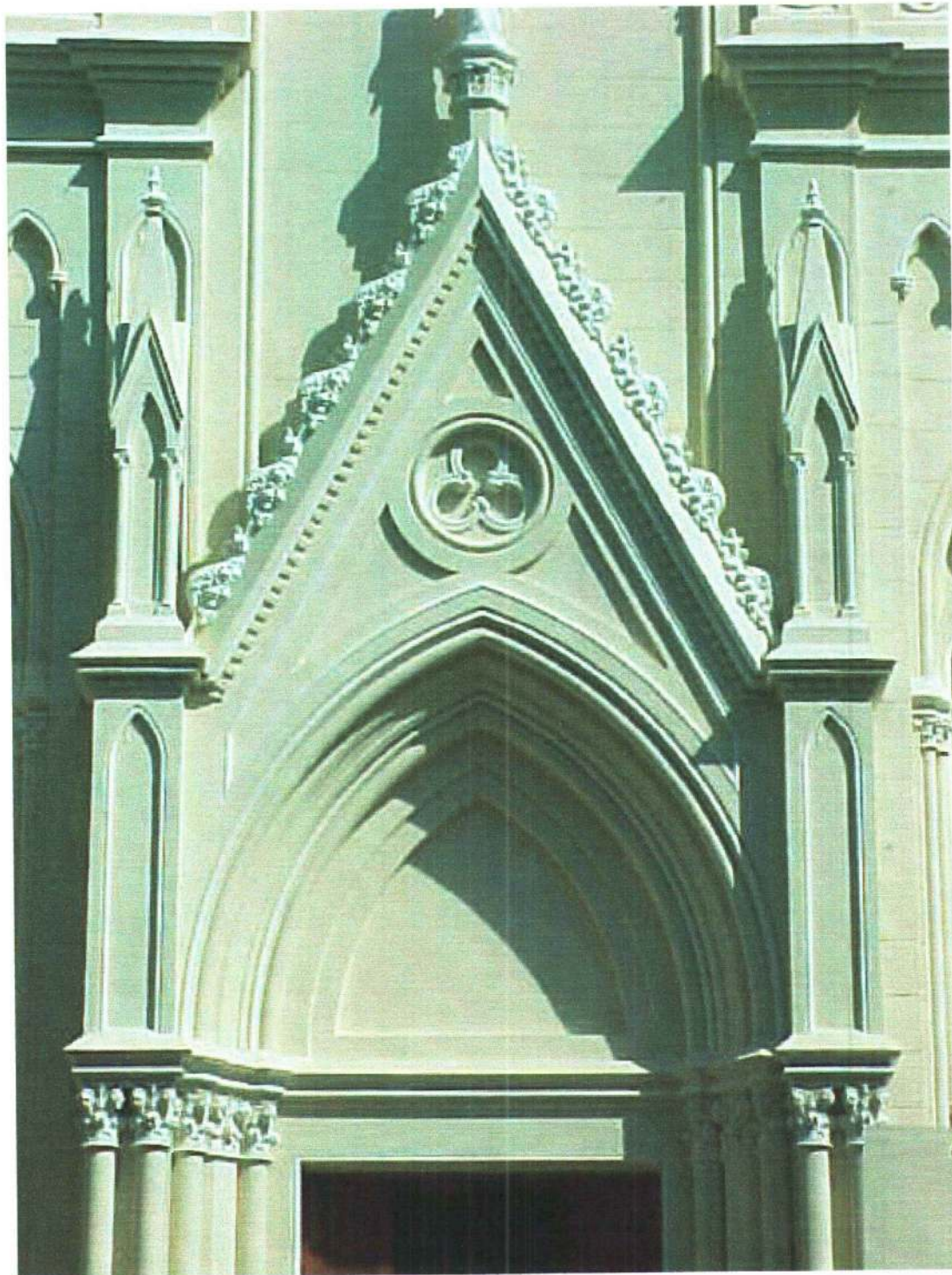


403

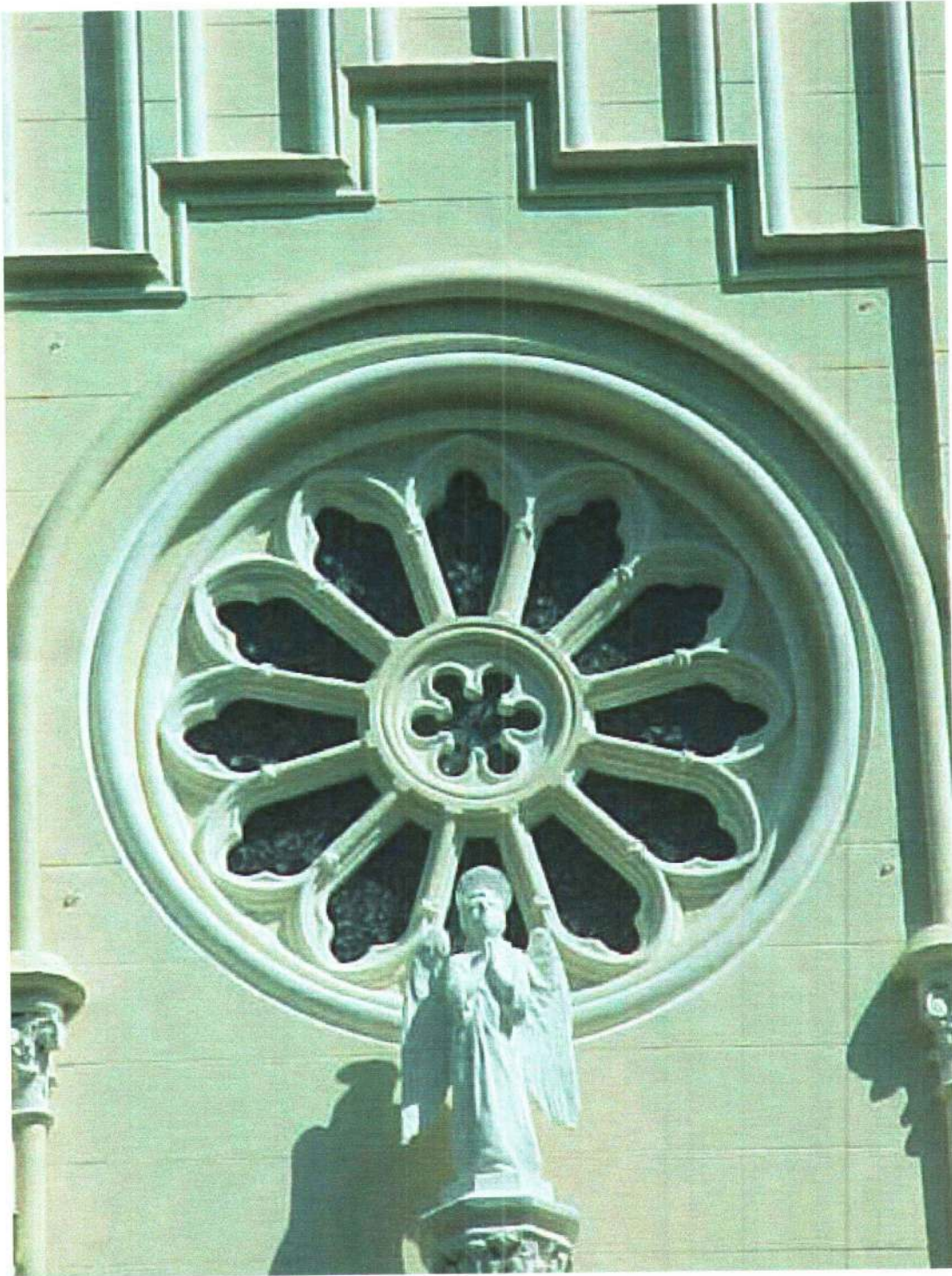


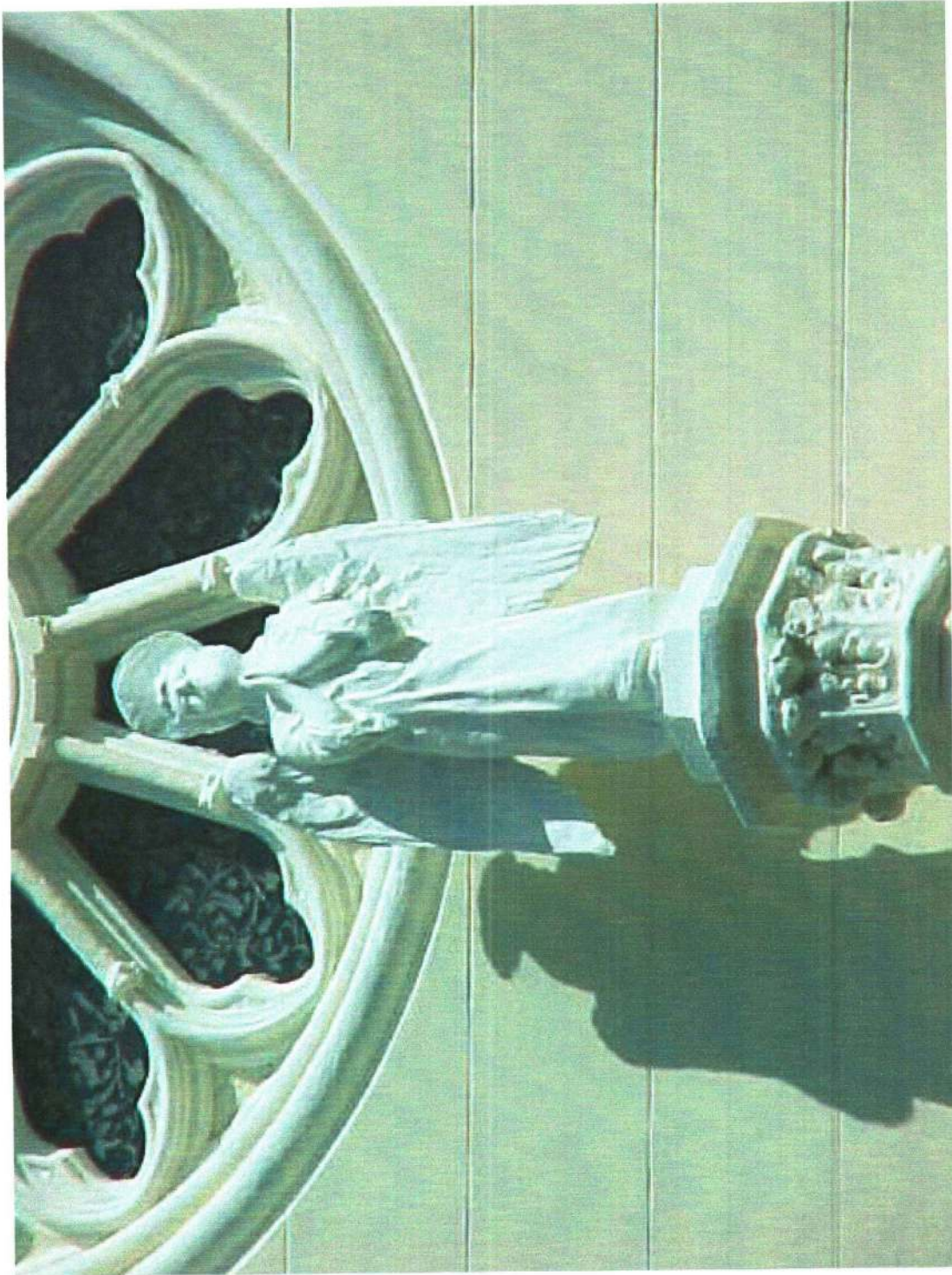
Capela - Vista lateral

408



405





408



408 v



409



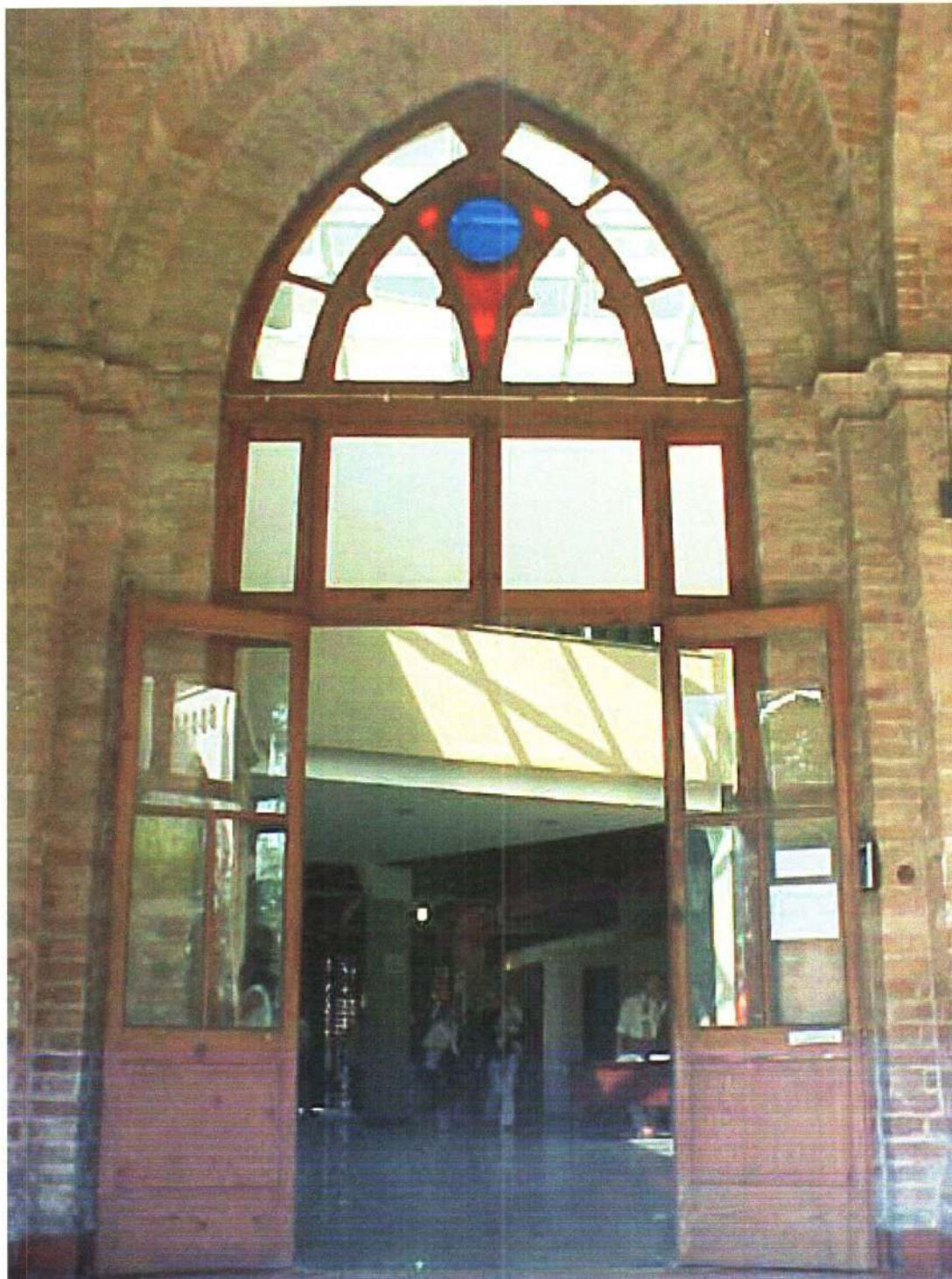
4m
W

IRMANDADE
DA SANTA
CASA DE
MISERICÓRDIA
DE SÃO PAULO

Unidade de Diagnóstico
por Imagem

Fotos Atuais - acesso
Plantas
Fachada

472
v



413
v



Vista interna da interligação entre a Unidade de Diagnóstico por Imagem e Pronto Socorro Central

414



Interligação entre a Unidade de Diagnóstico por Imagem e Pronto Socorro Central - Detalhe do caixilho original preservado e recuperado na reforma do Pronto Socorro Central

415
2



*Porta de acesso à Unidade de Diagnóstico por Imagem
Vista da interferência do bloco de circulação*

4762



Detalhe cobertura da Interligação da Unidade de Diagnóstico por Imagem e Pronto Socorro Central

121



IRMANDADE
DA SANTA
CASA DE
MISERICÓRDIA
DE SÃO PAULO

Corredores de
Interligação

Fotos antigas
Fotos atuais

400 V



423



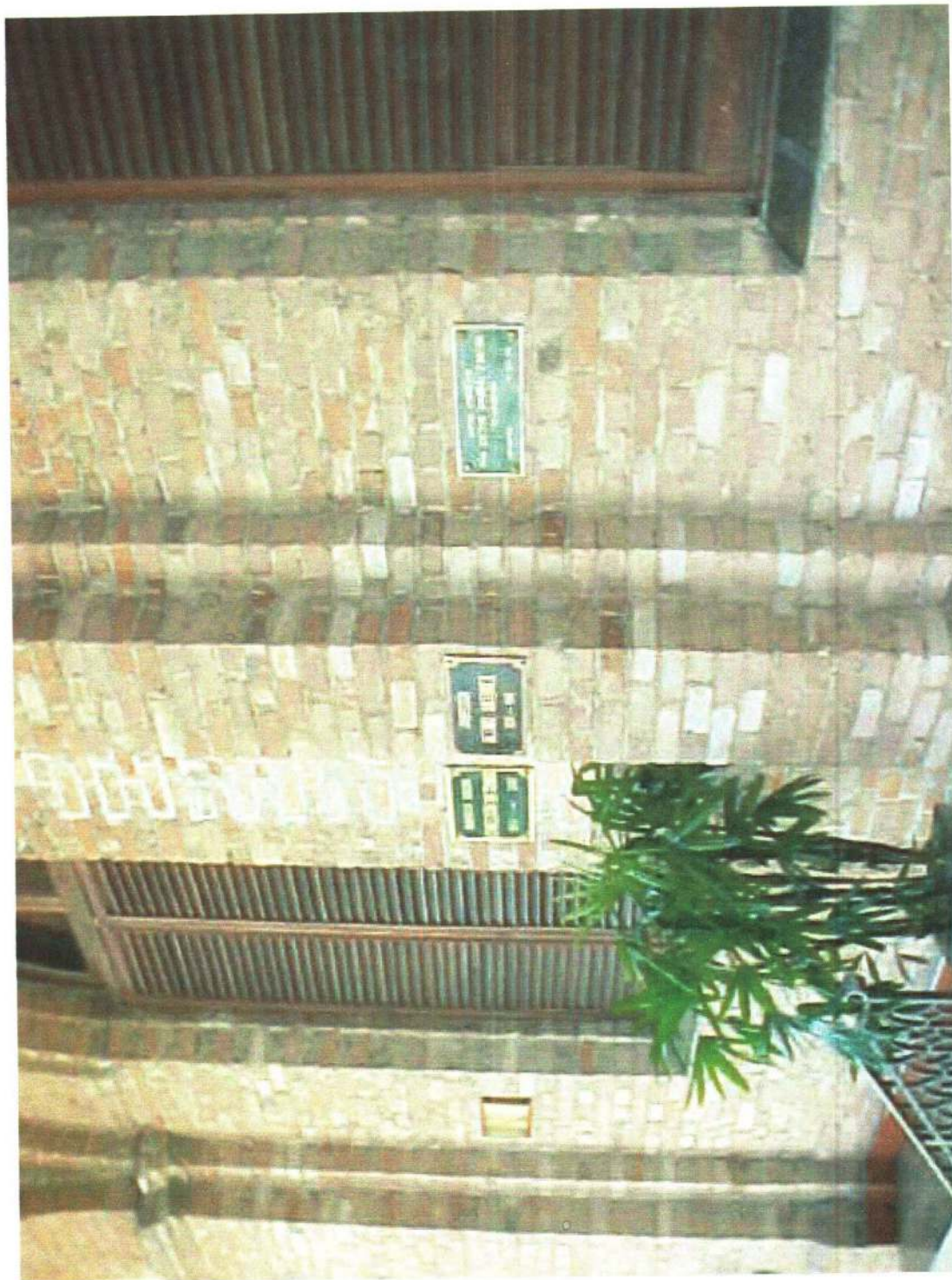
424



423



426



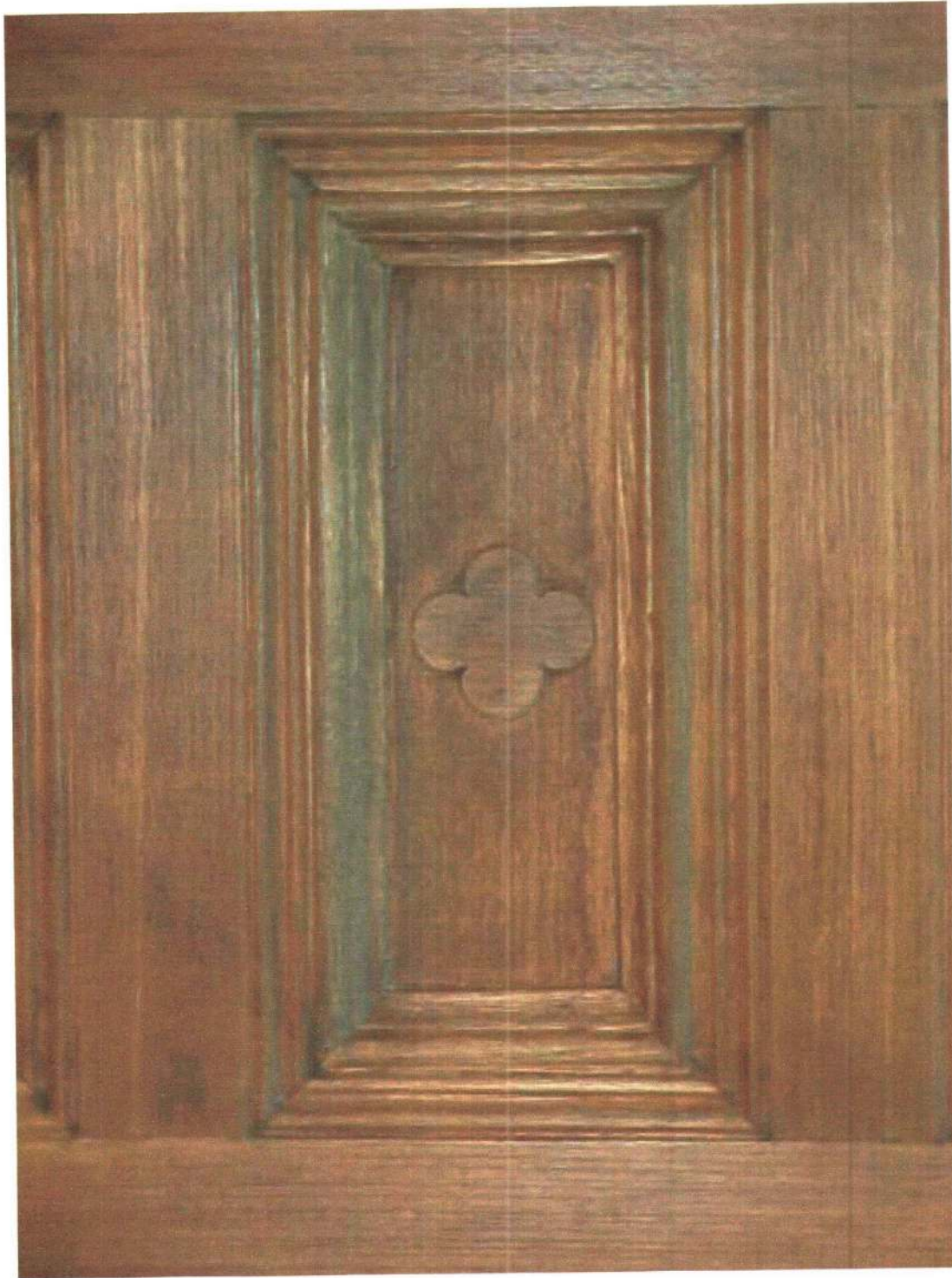
42X_v



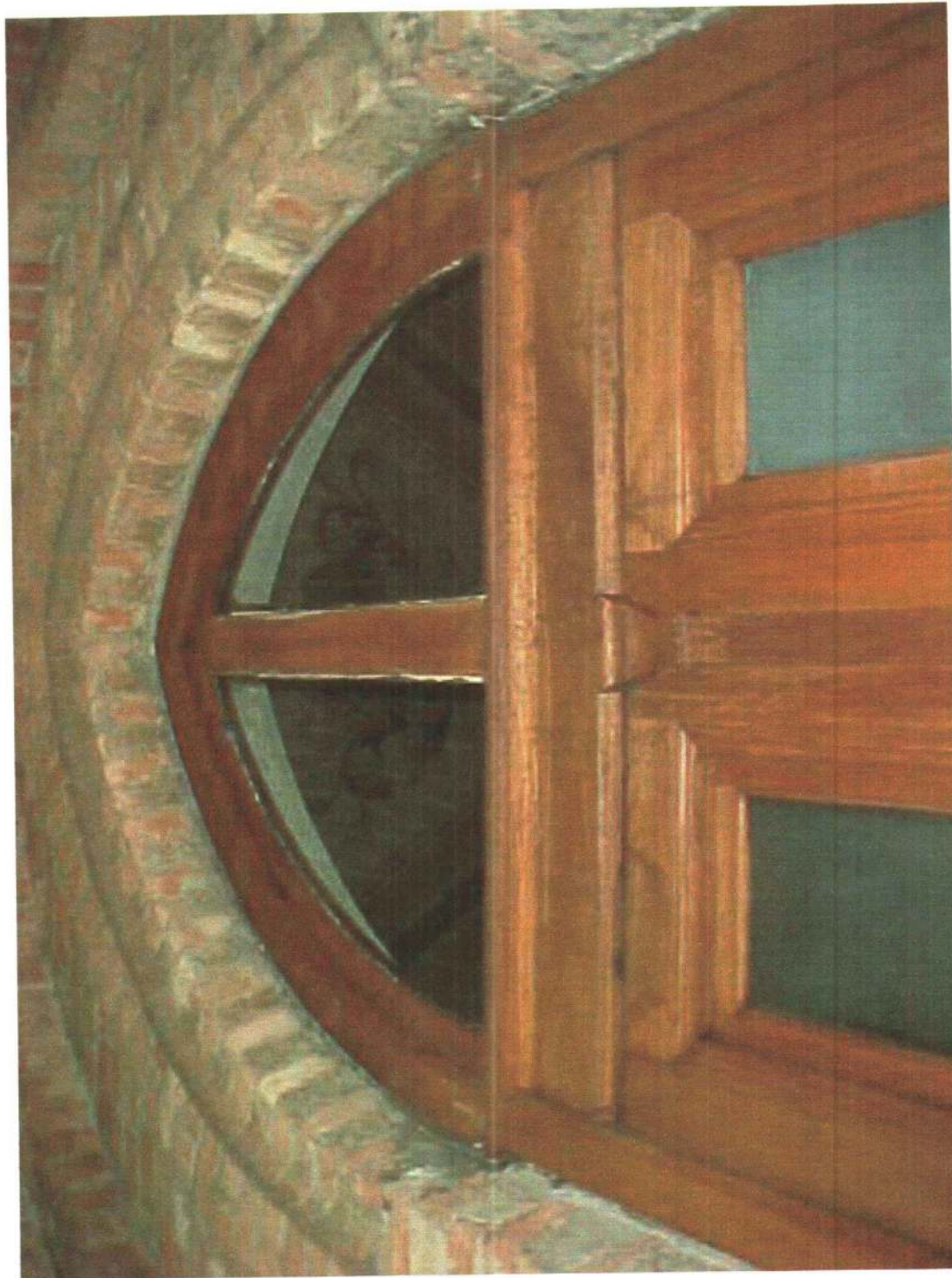
428



429



430 V



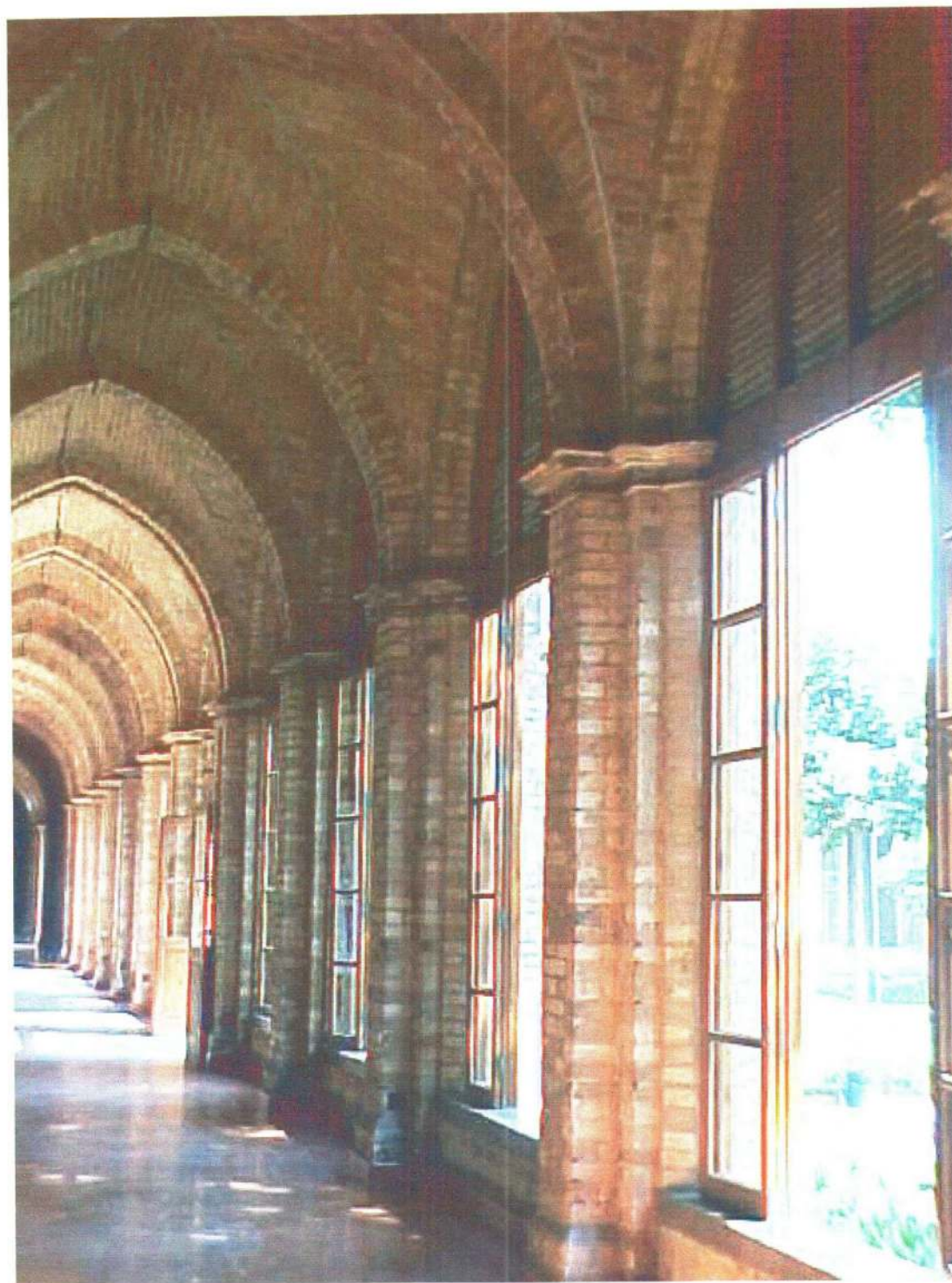
431 ↓



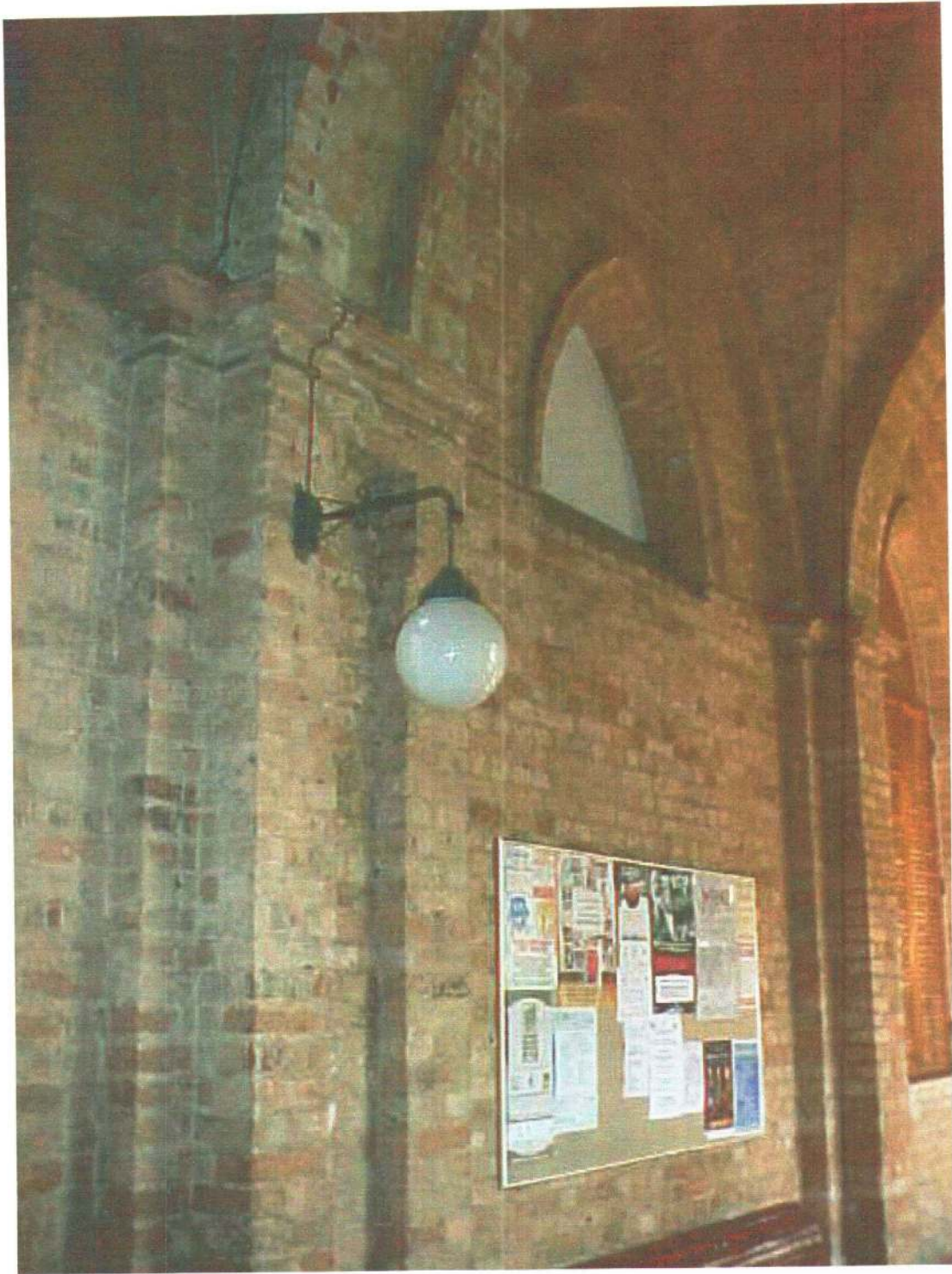
430/0



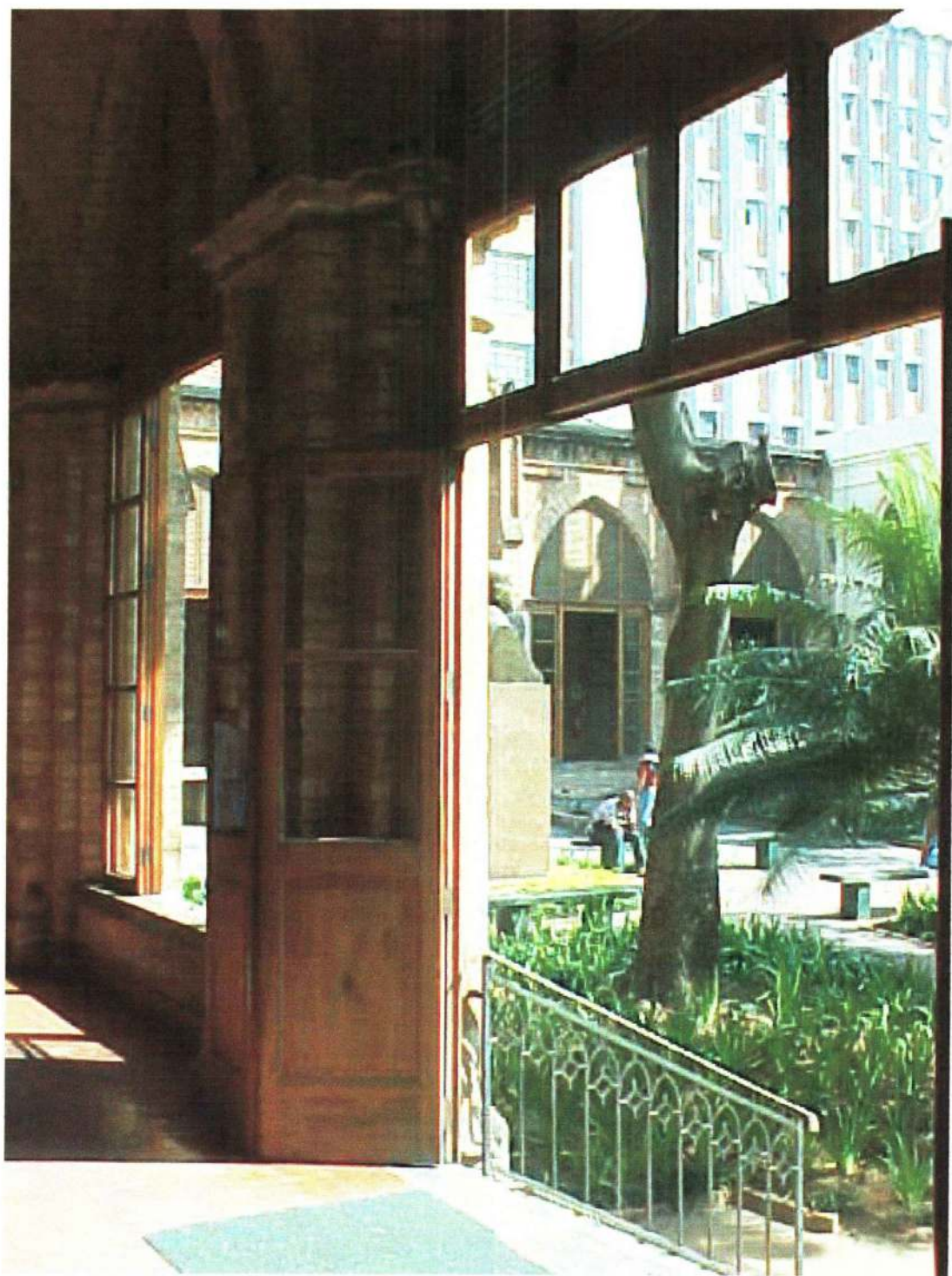
433v



434 v

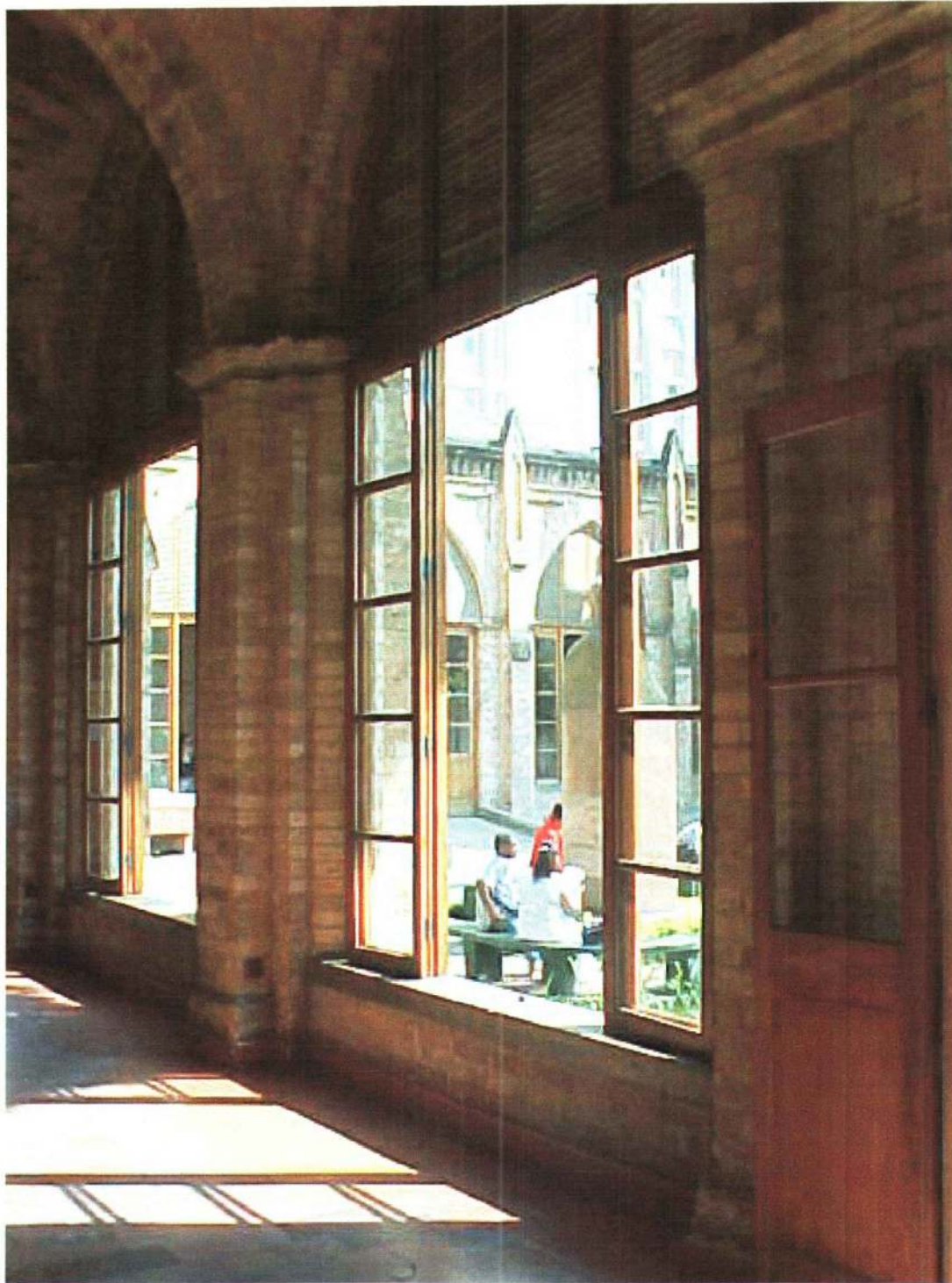


435v



Circulação lateral esquerda - Vista do jardim

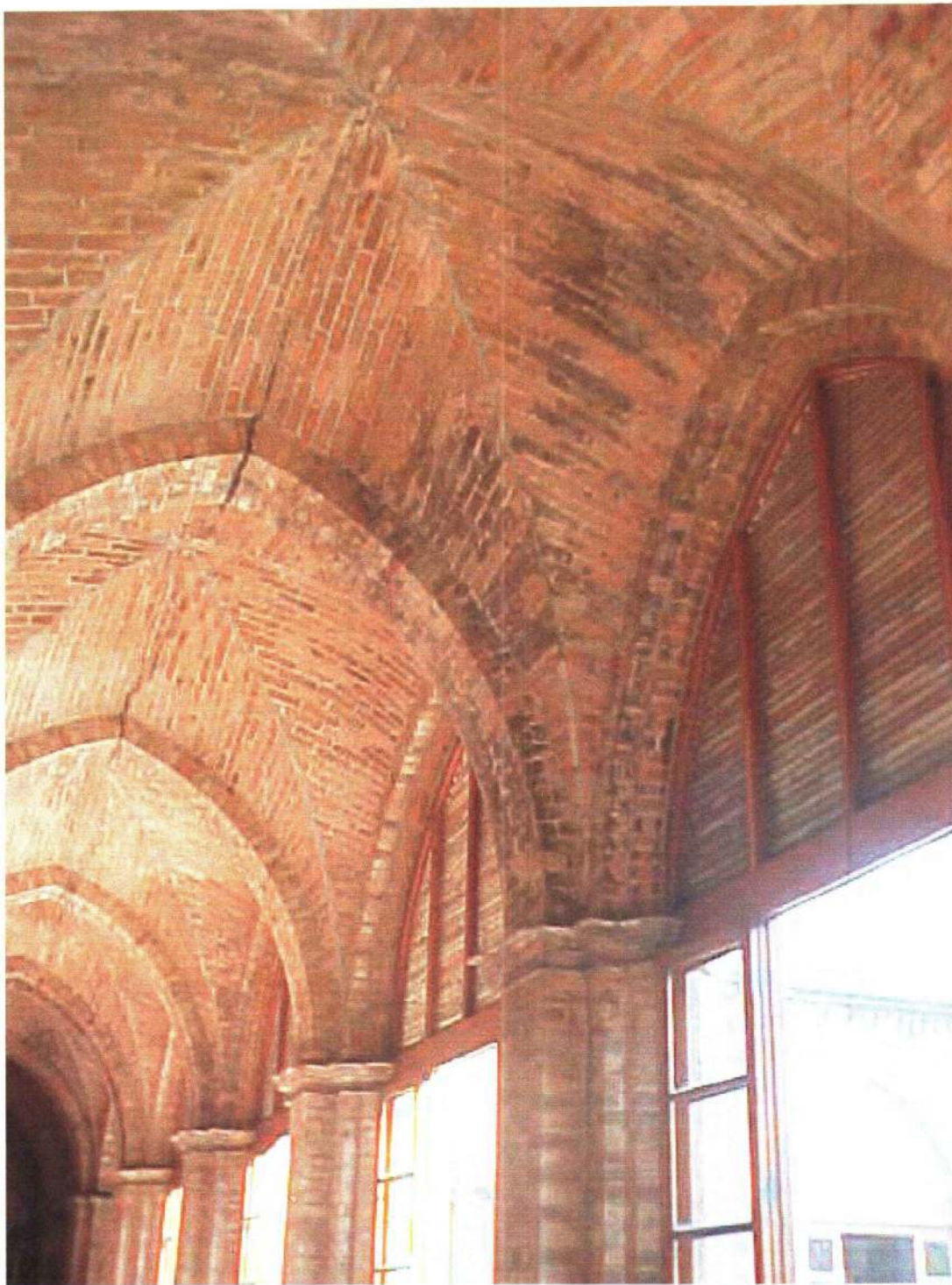
436



43X U



438 ✓



Corredor lateral esquerdo - Detalhe da abóboda

439



Corredor lateral esquerdo - Detalhe da alvenaria de tijolos

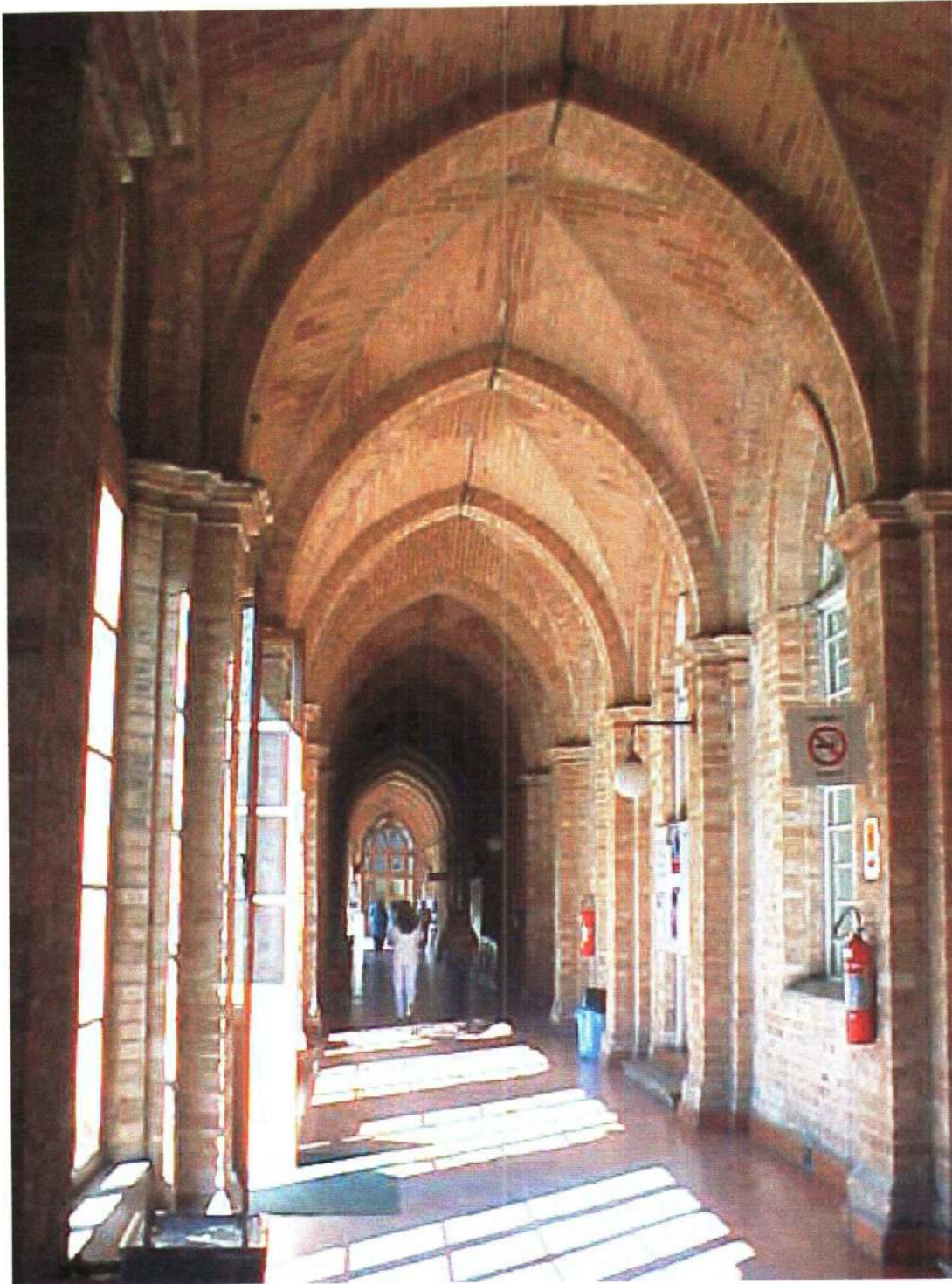
440



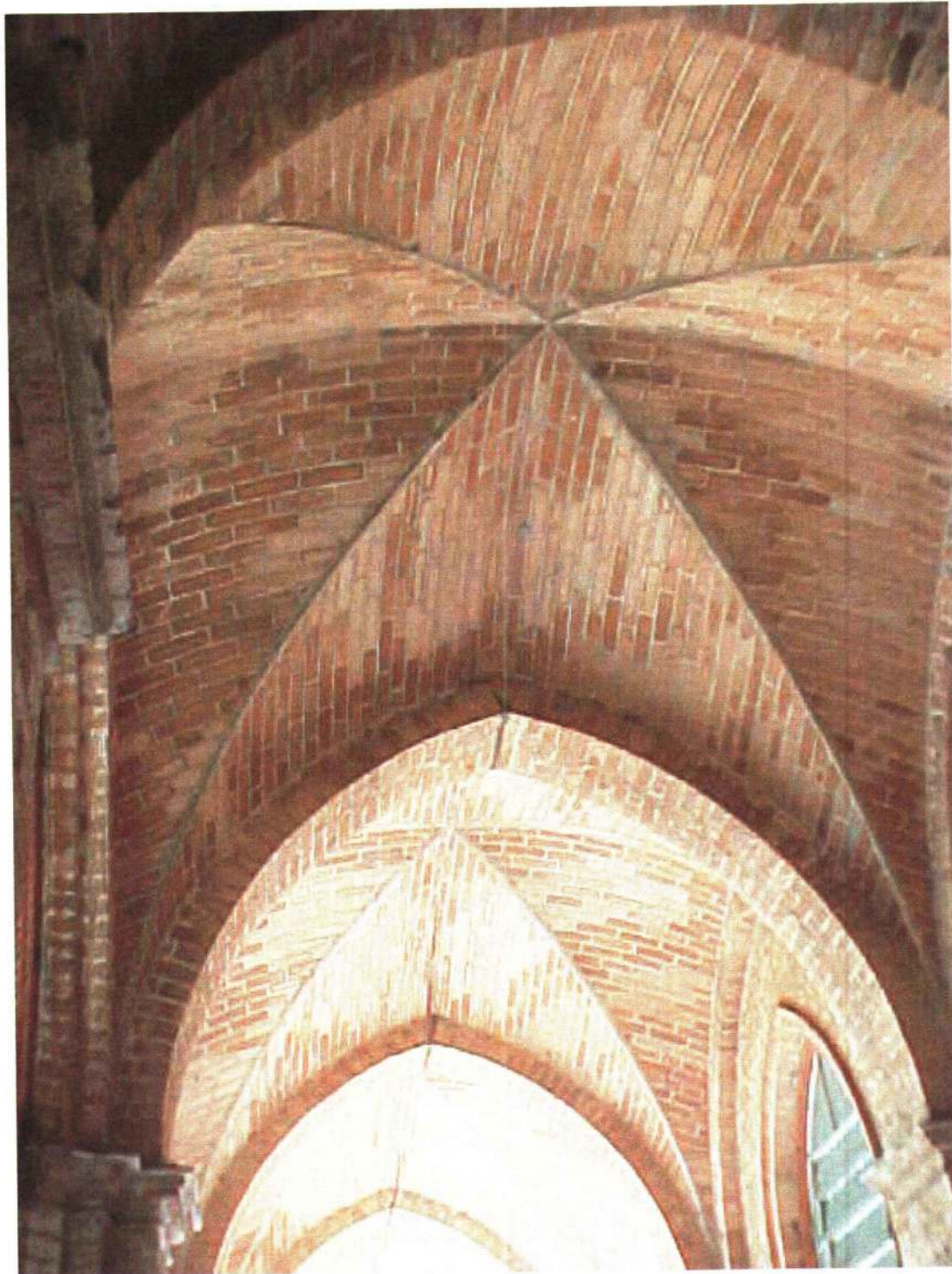
447



4472



443 ↓



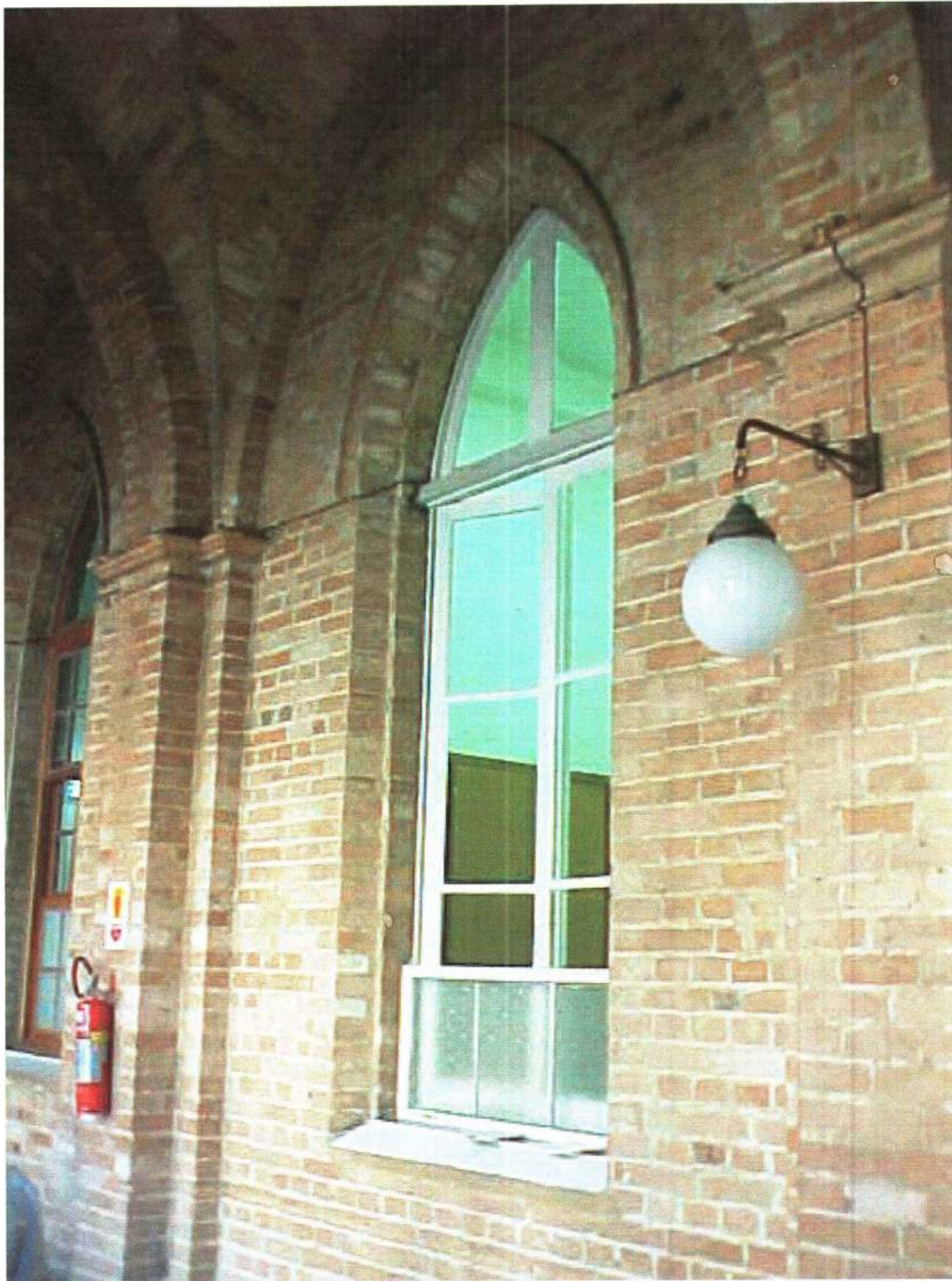
Corredor Central - Detalhe da Abóboda

4490



Circulação lateral direita

448 v



Corredor lateral direito - Detalhe do rodapé do caixilho e luminária

4/6/0



448 W



44B_v



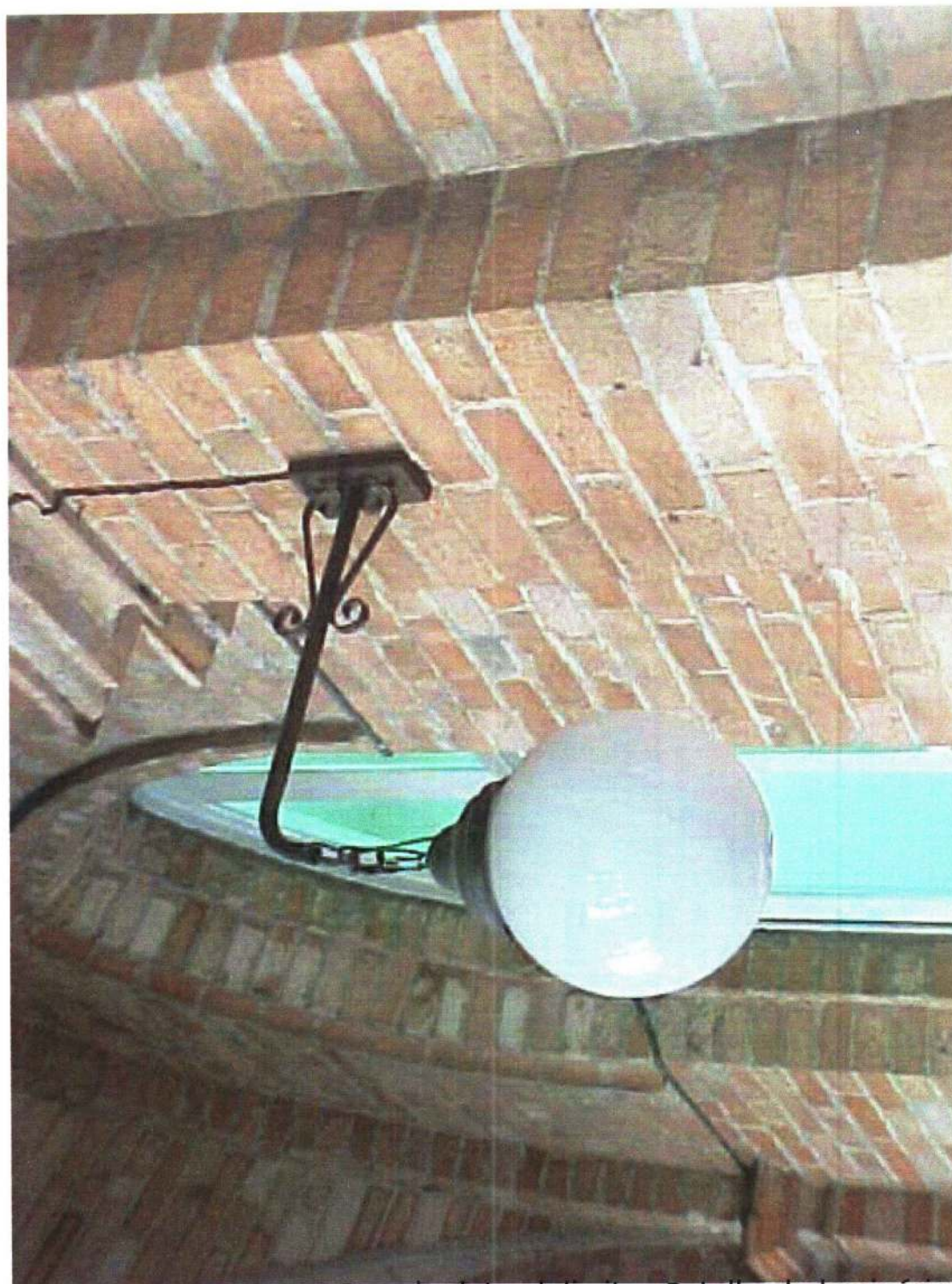
Corredor lateral direito - Detalhe da laje

449W



Laje circulação lateral direita - Detalhe do estado de conservação

450

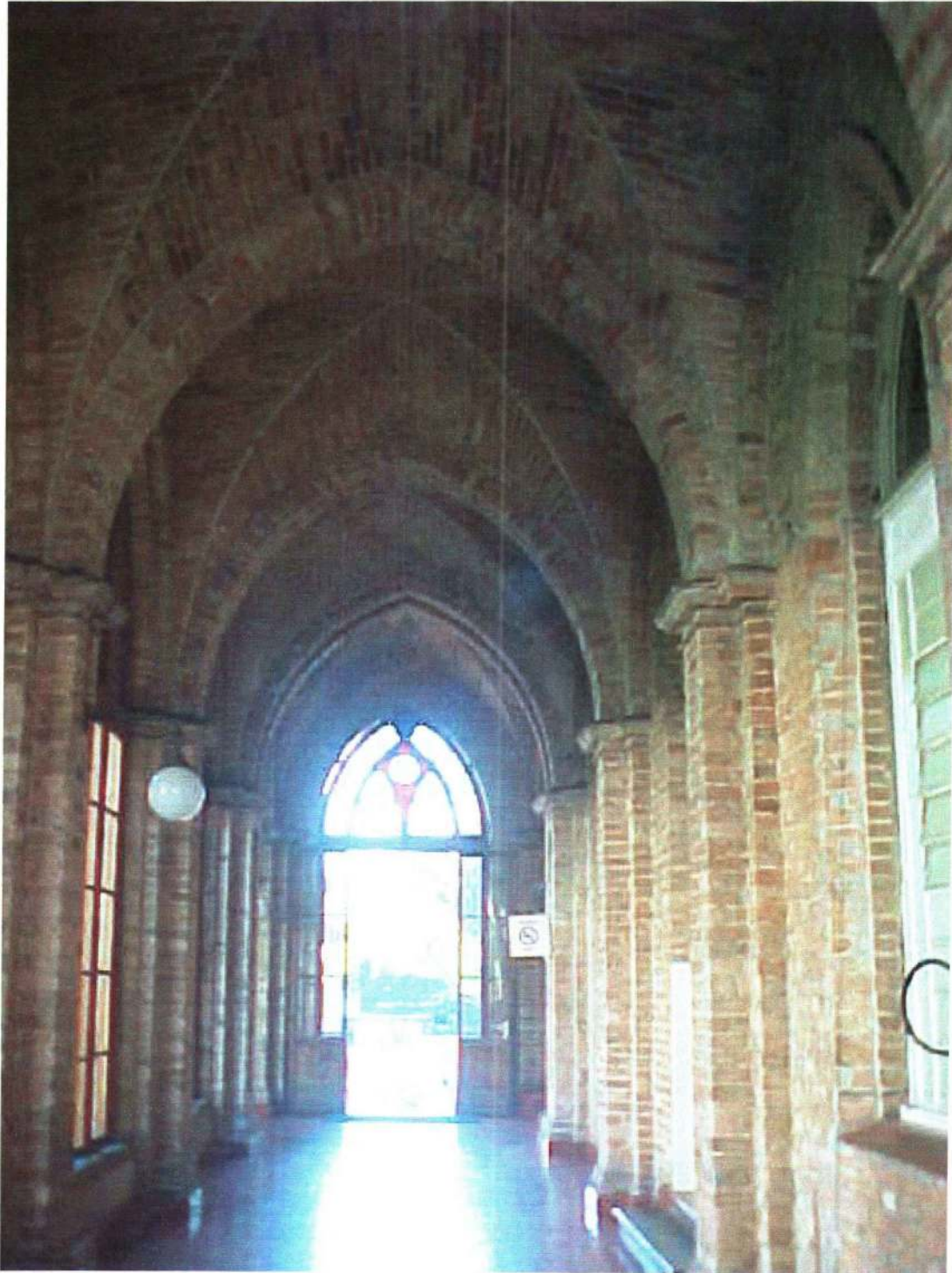


Corredor lateral direito - Detalhe da luminária

457 v

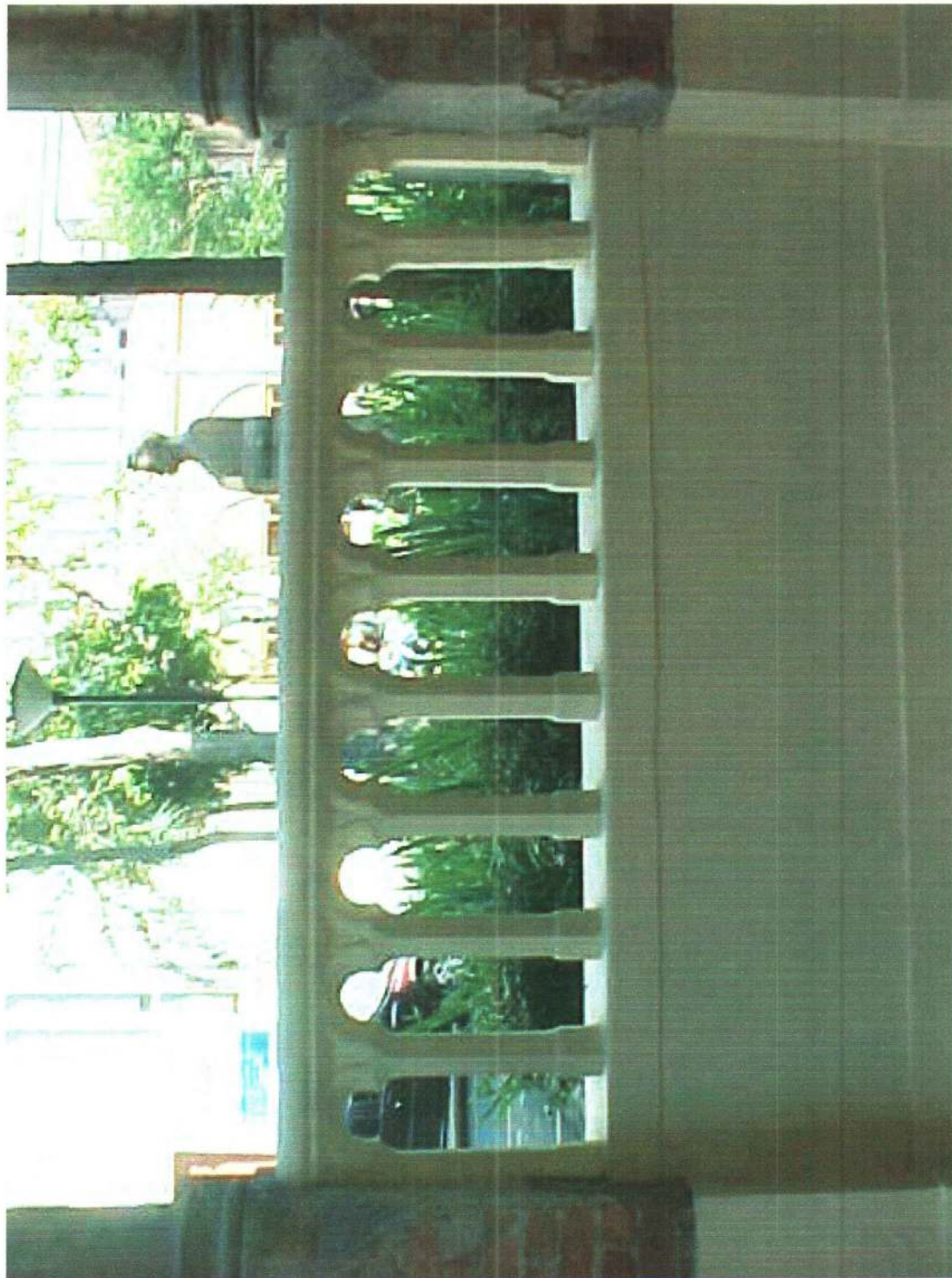


4520

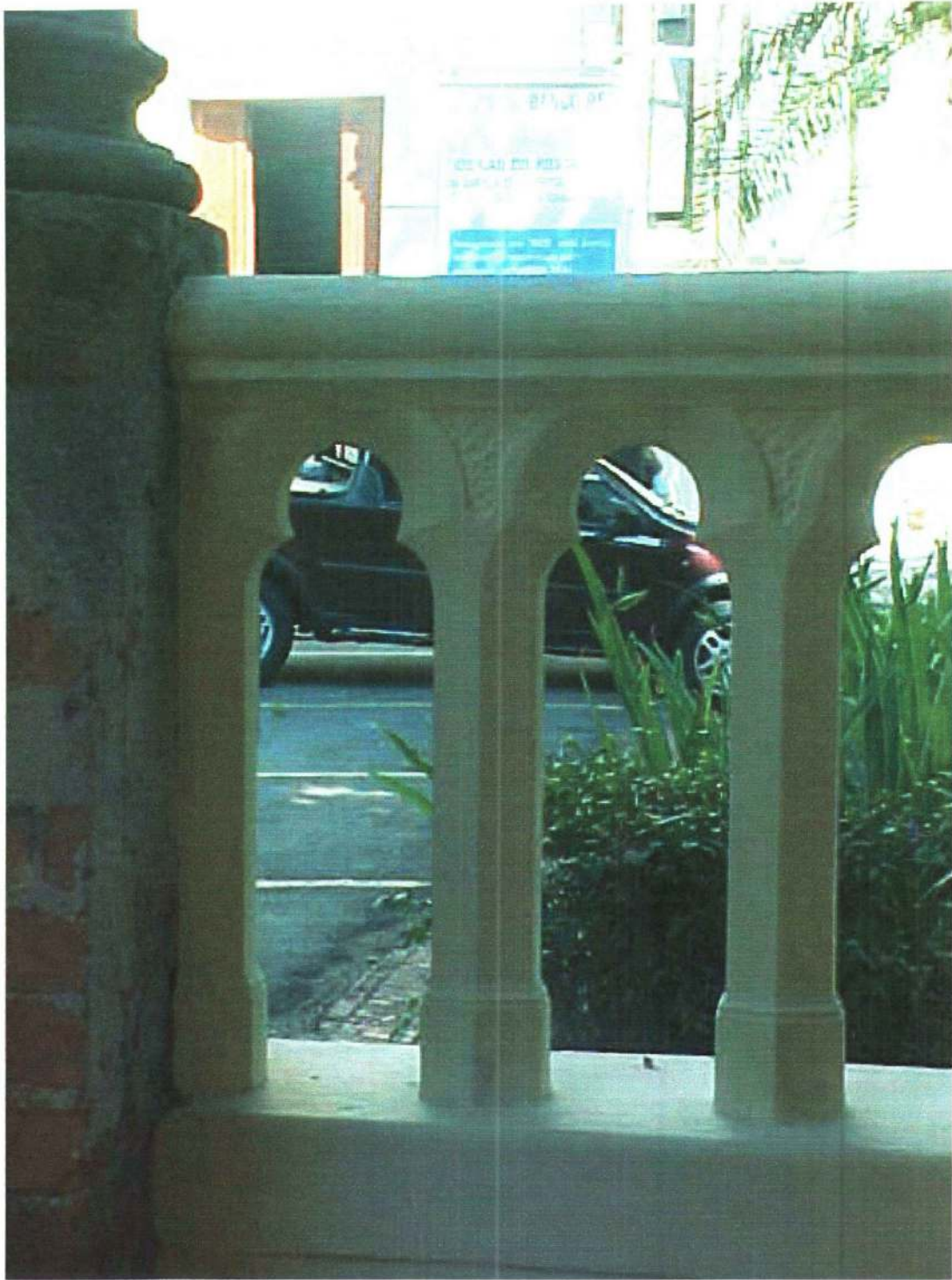


Circulação Interna Frontal

453



4590



IRMANDADE
DA SANTA
CASA DE
MISERICÓRDIA
DE SÃO PAULO

Unidade de Obstetrícia
e Ginecologia

Plantas
Fachada

4672

IRMANDADE
DA SANTA
CASA DE
MISERICÓRDIA
DE SÃO PAULO

Instituto Arnaldo
Vieira de Carvalho

Plantas
Fachadas antigas

487/10

IRMANDADE
DA SANTA
CASA DE
MISERICÓRDIA
DE SÃO PAULO

Pronto Socorro Central

Plantas
Fachadas

482

IRMANDADE
DA SANTA
CASA DE
MISERICÓRDIA
DE SÃO PAULO

Unidade de Ortopedia
e Traumatologia
Pavilhão Fernandinho
Simonsen

Fotos
Plantas
Fachadas e Corte

436 ✓



*Ornamento superior da porta principal de acesso
ao Pavilhão Fernandinho Simonsen*

487

IRMANDADE
DA SANTA
CASA DE
MISERICÓRDIA
DE SÃO PAULO

Laboratório Central

Planta
Corte e fachada

484 v

IRMANDADE
DA SANTA
CASA DE
MISERICÓRDIA
DE SÃO PAULO

Unidade de Pediatria
Pavilhão Condessa
Penteado

Foto Antiga
Plantas
Corte e fachada

405 v

